
ATI Multimedia Center 7.9

User's Guide

P/N 137-70319-20

Copyright © 2002, ATI Technologies Inc. All rights reserved.

ATI and all ATI product and product feature names are trademarks and/or registered trademarks of ATI Technologies Inc. All other company and/or product names are trademarks and/or registered trademarks of their respective owners. Features, performance and specifications are subject to change without notice. Product may not be exactly as shown in the diagrams.

Reproduction of this manual, or parts thereof, in any form, without the express written permission of ATI Technologies Inc. is strictly prohibited.

Disclaimer

While every precaution has been taken in the preparation of this document, ATI Technologies Inc. assumes no liability with respect to the operation or use of ATI hardware, software or other products and documentation described herein, for any act or omission of ATI concerning such products or this documentation, for any interruption of service, loss or interruption of business, loss of anticipatory profits, or for punitive, incidental or consequential damages in connection with the furnishing, performance, or use of the ATI hardware, software, or other products and documentation provided herein.

ATI Technologies Inc. reserves the right to make changes without further notice to a product or system described herein to improve reliability, function or design. With respect to ATI products which this document relates, ATI disclaims all express or implied warranties regarding such products, including but not limited to, the implied warranties of merchantability, fitness for a particular purpose, and non-infringement.

Table of Contents

- Starting ATI Multimedia Center..... 2
 - Starting from LaunchPad..... 2
 - Starting from Windows® taskbar..... 3
- Online Help..... 3
- TV 4**
 - Video-In..... 5
 - Setting up TV 6
 - Sizing the TV display 7
 - TV Control menu..... 8
 - TV display settings 9
 - TV video settings..... 10
 - TV Tuner settings..... 11
 - TV Stills Gallery settings 14
 - TV Schedule settings..... 14
 - ATI TV Bar 15
 - Channel Surfing..... 16
 - Closed Captioning 17
 - Hot Words™ 19
 - TV Magazine..... 21
 - Secondary Audio Program (SAP) 23
 - Zooming and panning..... 23
 - Video Desktop..... 24
 - Channel Lockout 25
 - Parental Control..... 26
 - Capturing Video and still images 27
- TV-On-Demand™ 29
- Digital VCR 32**
 - Saving and compressing captured video 32
 - Digital VCR settings 33
 - One Touch Record..... 36
 - Real-time MPEG encoding 37
 - Achieving the best results with MPEG video capture..... 38
- Media Library..... 40**

- TV Listings..... 41**
 - Setting up TV Listings 42
 - Getting around..... 43
 - Recording 43
 - Viewing 44
 - Views..... 44
 - Filter options..... 45
 - Actors tab 45
 - Categories tab 46
 - Searches 46
 - Favorite search 46
 - Movies tab 47
 - Schedules tab..... 48
 - Searches tab..... 48
 - Setting search parameters..... 49
 - Sports tab..... 50
 - Stations tab 50
 - Titles tab 51
 - Days and dates..... 51
- Stills Gallery 52**
 - Stills Gallery settings..... 52
- CD Audio..... 54**
 - CD Audio settings 55
 - CD Database..... 56
 - CD Audio Schedule settings..... 57
- Video CD 58**
 - Video CD Control menu..... 59
 - Capturing still frames from Video CDs 60
 - Zooming and Panning 60
 - Video CD Display settings 61
 - Video CD Preferences settings..... 62
 - Video CD Stills Gallery settings 62

- DVD 63**
 - What can I play on my DVD drive?..... 64
 - Sizing the Video Display panel 64
 - Full-screen controls 64
 - Playing DVD Video Disks 65
 - Selecting audio channels 65
 - Setting up sub-titles 65
 - Using the menus 66
 - Searching DVD disks 66
 - Selecting viewing angle..... 66
 - Parental Control..... 67
 - Zooming and Panning 67
 - DVD Control menu 69
 - DVD display settings..... 70
 - DVD Preferences settings 71
 - DVD Video settings 72
 - DVD Closed Captioning 72
 - DVD Schedule settings 73
 - Region codes 74
- File Player 75**
 - File Player Control menu 76
 - Zooming and Panning 77
 - File Player Display settings..... 78
 - File Player Preferences settings..... 79
 - File Player Stills Gallery settings 79
 - File Player Schedule settings..... 79
- Schedule 80**
 - Schedule settings 81
- TV Out..... 82
- Multi-monitor support 83
- Teletext 83**
- Troubleshooting..... 84
 - Audio problems 84
 - Video problems 89

Using Your ATI Multimedia Center

This chapter explains how to use the special features that your ATI Multimedia Center offers. The Multimedia Center is a suite of products that provides TV, Video CD, CD Audio, DVD, File Player, and TV Listings in one package.

Because North American and European television use different broadcast standards, closed-captioning and related features are available only in North America and selected countries. Teletext is only available for European TV viewing.



IN THIS CHAPTER...

- **Starting ATI Multimedia Center** on page 2
- **TV** on page 4
- **ATI TV Bar** on page 15
- **Media Library** on page 40
- **TV-On-Demand™** on page 29
- **Digital VCR** on page 32
- **TV Listings** on page 41
- **Stills Gallery** on page 52
- **CD Audio** on page 54
- **Video CD** on page 58
- **DVD** on page 63
- **File Player** on page 75
- **Schedule** on page 80
- **TV Out** on page 82
- **Multi-monitor support** on page 83
- **Teletext** on page 83
- **Troubleshooting** on page 84

Starting ATI Multimedia Center

Starting from LaunchPad

The LaunchPad provides a convenient way to start all your Multimedia Center features — just click the feature you want. LaunchPad opens automatically when you start your computer, or if you prefer, you can right-click LaunchPad, and uncheck **Load on Startup** in the drop-down menu.



- To dock LaunchPad, right-click it, then click **Dock** in the menu. To change the docking position, right-click LaunchPad while it is docked, point to **Side ▶**, then choose a location.
- To change the size of the LaunchPad when it is not docked, double-click it or right-click it, and choose a size.

The buttons in the right side of LaunchPad let you access your desktop settings, get Help, and close LaunchPad. If your system does not have a TV tuner, **Video In** appears in place of TV in the LaunchPad.

Note

Certain Multimedia Center features use some of the same resources. If you try to start one of these features while another is running, a resource conflict message appears. You have up to four choices:

- Run both features with reduced performance, where possible.
- Suspend the first feature while the other is active.
- Close the first feature.
- Press **Cancel** to continue without starting the second feature.

Starting from Windows® taskbar

- 1 In the Windows taskbar, click **Start**.
- 2 Point at **Programs** ►.
- 3 Point at **ATI Multimedia Center** ►.
- 4 Click **CD Audio, DVD, LaunchPad, File Player, TV, Video CD, REMOTE WONDER, Configuration, Library, Teletext** (where available), or **Guide Plus+**.

For information about using the ATI Multimedia Center features, see the online help.

Online Help



Feature Help. Click the Help button in any display panel to open the online help.

F1

Context-Sensitive Help. Context-sensitive help is always available for each feature; just press the F1 key.



Tool Tips. Simply move the mouse cursor over a control to see a description of its purpose. As you become familiar with your ATI Multimedia Center, you may want to turn off Tool Tips — click the **Show Tool Tips** checkbox in the **Display** tab (for more information, see [TV display settings](#) on page 9).



ATI Desktop Help. For help on your ATI video card's graphics features, double-click the ATI icon in the lower-right corner of your screen.

TV

Watch Television on your computer! You can receive up to 125 cable television channels and 70 antenna channels in smooth, full-motion video on the whole screen or in a window.

TV delivers advanced features: Closed Captioning, Video/Still Capture, Channel Surfing, Scheduled Events, TV Listings, Parental Control, and more.

When you click the logo in the upper left corner of the display panel, the “About...” notice appears. If you have more than one feature installed, a Task menu displays available and active features.

For information about using TV controls, see the online help and Tool Tips.

**Note**

- All channels may not be available in all countries.
- Not all TV features are available with Video-In cards.

To start TV

from LaunchPad

Click TV in the Launchpad. For information on LaunchPad, see [page 2](#).



from Windows® taskbar

- 1 In the Windows taskbar, click **Start**, then point at **Programs** ►.
- 2 Point at **ATI Multimedia Center** ►, then click **TV**.



You can also start TV from other Multimedia Center features installed on your system. Click the ATI logo in the upper left corner of the feature's control panel, then click **TV**.

Video-In

ALL-IN-WONDER RADEON family cards, ALL-IN-WONDER VE Series cards, and ALL-IN-WONDER 9000 Series cards support video capture. If there is no TV tuner in your computer system, a small control panel is provided for capturing video from external video sources.

Note

If you have a Video-In card, the following dialogs and features are unavailable:

- TV Tuner settings (see [page 11](#).)
- Channel Surfing (see [page 16](#).)
- TV-on-Demand (see [page 29](#).)
- Program Lockout (see [page 25](#).)
- Parental Control (see [page 26](#).)

Setting up TV

The first time you start TV, you must complete the Initialization Wizard. After that, the Wizard will not run unless you want to re-run it in order to change settings. The Initialization Wizard guides you quickly and easily through setting up TV channels, Parental Control, Sound, and TV-on-Demand.

Initialization Wizard



Click the Setup button, then click the **Display** tab.

Click the **Initialization Wizard...** button. The *TV Channels Initialization Wizard* appears. Follow the Wizard's instructions to select cable or antenna, choose the broadcast standard, and to scan for active channels.

Click **Next** >. The *TV Parental Control Initialization Wizard* appears. Follow the Wizard's instructions to set or change your Parental Control password.

Note

- Passwords are **optional**.
- Passwords are **case-sensitive**, and must be at least **three characters** in length.
- If you forget your password, you will have to uninstall and reinstall your TV software.

Click **Next** >. The *Sound Initialization Wizard* appears. Follow the Wizard's instructions to set up your audio connection.

- If you do not hear TV audio, ensure that the TV is tuned to a broadcasting channel, and that you have made the correct audio connections. See [Troubleshooting](#) on page 84 for more information.

Click **Next** >. The *TV-on-Demand Initialization Wizard* appears. Follow the Wizard's instructions to set up a temporary file and allocate file space. Available time is indicated. The **Advanced Settings** button lets you customize settings for image quality and processor load.

Click **Next** >. The *End of Initialization Wizard* panel appears. Click **Finish** to complete TV setup.

Sizing the TV display

You can resize the TV display using the mouse, the Maximize button, or CTRL key combination.

- The F2 key hides/shows the control panel, to save desktop space.



To resize the TV display using the mouse

Drag the display's border. The TV display maintains a fixed aspect ratio (width-to-height) of 4:3 to avoid picture distortion (to change this, see [TV display settings](#) on page 9).



To display TV in full-screen

Press CTRL+F or ALT+F to toggle between full-screen and the current size, or click the Maximize button. To return to the previous size, press the **Esc** key.

Ctrl

To display preset sizes using the CTRL key

160 x120 pixels	CTRL+1
240 x180 pixels	CTRL+2
320 x240 pixels	CTRL+3
640 x480 pixels	CTRL+4
Toggle between full screen and current size	CTRL+F ALT+F
Increase size of display panel	CTRL + Up Arrow
Decrease size of display panel	CTRL + Down Arrow

TV Control menu

You can access TV functions by right-clicking on the viewing area of the display panel. This is very useful in full-screen mode. The following menu items are available:

Setup	Opens the TV setup page.
Always On Top	Displays TV on top of other applications.
Aspect Ratio	Sets the aspect ratio.
Hide Controls	Hides the TV Control panel.
Blended Window	Enables Blended Window.
Video Size	Indicates the sizes available for the current panel: 160x120, 240x180, 320x240, 640x480, Full Screen.
Blended Desktop	Enable Blended Desktop
Connector	Specifies the video input: TV Tuner Selects TV Tuner input. Composite Selects composite video input. S-Video Selects S-Video input.
Sound Mode	Sets the audio mode: Captions when muted Displays closed captions when audio is muted. Stereo Enables stereo TV audio. Mono Enables monaural TV audio. SAP Enables the Secondary Audio Program.
Closed Captions	Specifies how closed-captioned text is displayed. You can also enable the Hot Words and TV Magazine features. See <i>Hot Words™</i> on page 19 and <i>TV Magazine</i> on page 21.
Zooming	Select zoom ratio (2x , 4x , or 8x) or Unzoom if already zoomed. See <i>Zooming and panning</i> on page 23.
About...	Displays the About... dialog.
Exit	Closes TV.

TV display settings

The Display settings page lets you control how video is displayed in TV.

To open the Display settings page



Click the Setup button in the TV control panel, then click the **Display** tab.

Video Size	<p>Size Indicates the sizes available for the current panel. If the current panel does not support resizing, the values are greyed-out.</p> <p>Aspect Ratio Sets the aspect ratio.</p> <p>Crop Video Crop image edges to hide overscan noise.</p>
Tool Tips	<p>Show Tool Tip Show helpful aids for using TV when you point at a control with your mouse.</p> <p>Show Shortcut Show keyboard shortcuts when you point at a control with your mouse.</p>
Display Feature	<p>Video Desktop When TV is minimized, TV display replaces your desktop pattern.</p> <p>Fixed Aspect Ratio Click to preserve the width-to-height ratio when you resize or zoom the display.</p> <p>Always On Top Display TV on top of other applications.</p> <p>Auto Hide Controls when in full screen Hide TV controls when displaying TV in full screen.</p>
Hide Player Hotkey	<p>Specify a keyboard key that hides/displays TV.</p>
Initialization Wizard	<p>Re-runs the Initialization Wizard. See Initialization Wizard on page 6.</p>

TV video settings

The video settings page lets you choose a video connector and fine-tune video characteristics.

To open the Video settings page



Click the Setup button in the Television control panel, then click the **Video** tab.

Connector	Choose cable, composite or S-Video input. <ul style="list-style-type: none"> • If you choose Composite or S-Video, you must specify the Broadcast Standard.
Broadcast Standard	Choose the broadcast standard: NTSC, PAL, or SECAM.
Video Properties	<p>Color Adjusts the amount of color in the image.</p> <p>Brightness Adjust the amount of white in the image.</p> <p>Contrast Adjusts the gradation of tones between light and dark areas.</p> <p>Tint Adjusts the balance of red-to-blue in the image. <ul style="list-style-type: none"> • Tint is not adjustable for PAL or SECAM. </p>
Gamma Setting	Adjusts the color temperature of your display. The higher the gamma, the higher the brightness and contrast of your display, with maximum being a flat (unmodified) setting.

TV Tuner settings

The tuner settings page lets you autoscans for active TV channels, choose cable or antenna input, name channels, and set channel-specific options.

To open the Tuner settings page



Click the Setup button in the TV control panel, then click the **TV Tuner** tab.

Channel Name	You can enter channel names. If you have TV Listings installed (see TV Listings on page 41), channel names are set automatically, based upon the Guide+ database.
Details...	Select a channel, then click the Details... button to open the Channel Property Details page (see Channel Property Details on page 11).
Autoscan	Scans for all active TV channels, and stores them when you click the Set button.
Cable Standard	Selects the country and cable or antenna.

Channel Property Details

When you select a channel and then click the **Details...** button in the TV Tuner settings page, the Channel Property Details page opens to let you set properties for particular channels—favorites list, channel assignment, and properties for audio, video, program lockout, and closed captioning.

For example, in the Channel Specific Settings Video page, you could change a channel to SECAM when the other channels are (by default) PAL. In the Closed Captioning page you could enable a set of Hot Words specifically for a particular channel.

Channel Name	Type a name for the channel.
Number	Displays the channel number.
Tunes to Station	Specify the TV station that is received when you tune to a particular channel. Autoscanning returns all channel assignments to normal (see Autoscan on page 11).
Channel in Favorites List	Check to add the channel. To remove a channel, uncheck it.
Channel in Visual Selection List	Check to add the channel to the Visual Selection list displayed when channel surfing (see Channel Surfing on page 16). To remove a channel, uncheck it.
Channel Specific Settings	<p>Audio Click Audio, then click Details... to open the Sound details page.</p> <p>Mute Settings</p> <p>Global Applies mute settings to selected channel.</p> <p>Mute On Mutes audio.</p> <p>Mute Off Cancels muting.</p> <p>SAP Settings see Secondary Audio Program (SAP) on page 16.</p> <p>Global Applies SAP settings to selected channel.</p> <p>Stereo Activates stereo TV audio for this channel, if it provides it.</p> <p>Mono Activates monaural audio for this channel.</p> <p>SAP Activates SAP for this channel.</p>

**Channel
Specific
Settings****Video**

Click **Video**, then click **Details...** to open the Channel Based Video Settings page. Move the sliders to change the values

Color	Amount of color in the image.
Brightness	Balance of light and dark in the image.
Contrast	Gradation of tone between the image's highlights, midtones and shadows.
Tint	Balance of red, green, and blue in the image.

Broadcast Standard

Choose the broadcast standard for this channel.

Program Lockout

Click **Program Lockout**, then click **Details...** to open the Program Lockout Settings page (see [Program Lockout](#) on page 25).


Closed Captioning

Click **Closed Captioning**, then click **Details...** to open the Closed Captioning Channel Settings page (see [Closed Captioning](#) on page 17).

TV Stills Gallery settings

You can capture still images from TV, and save them in the Stills Gallery.

To open the TV Stills Gallery settings page

 Click the Setup button in the TV control panel, then click the **Stills Gallery** tab. For information on the Stills Gallery, see [Stills Gallery](#) on page 52.

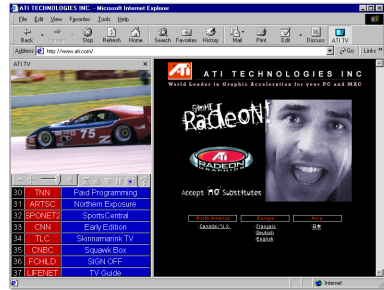
TV Schedule settings

The Scheduler lets you set up TV to watch or record selected TV programs at times you specify. See [Schedule](#) on page 80 for details.

ATI TV Bar

Browse the Web and watch TV at the same time, without resizing your windows! ATI TV Bar displays TV in your Internet Explorer Web Browser.

North American users can also view a display of channel names and numbers, with continuously updated program information.



To open ATI TV Bar

- 1 Launch Internet Explorer.
- 2 In Explorer's menu bar, click **View** ►, point to **Explorer Bar** ►, then click **ATI TV**.



Or click the ATI TV button in Explorer's menu bar.

- If TV is not running, ATI TV Bar opens it, and displays it in the TV Bar. Closing ATI TV Bar also closes TV.
- If TV is running, it is displayed in TV Bar, and the regular TV display disappears from your desktop. Closing TV Bar returns TV to its normal display on your desktop.
- If you resize Explorer, the TV display automatically fits itself to the new size.

ATI TV Bar controls

From left to right, the ATI TV Bar controls are:

Channel down, Channel up, Volume, Mute, Go to top, Page up, Page down, Pause scrolling, Favorites, and Help.




Channel Surfing

You can browse through several TV channels simultaneously, and select channels by clicking on “thumbnail” images (miniature representations) of the channels. Each thumbnail displays the channel number, and is regularly updated to display the current program.



- A password is required to access locked-out channels (see [Channel Lockout](#) on page 25); otherwise, only unlocked channels will be displayed.
- Most controls are disabled during Channel Surfing.

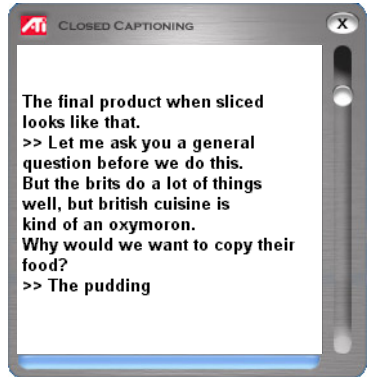
To use Channel Surfing

-  Click the Channel Surf button in the TV control panel.
A grid of thumbnails appears over your TV display.
- Click the thumbnail for the channel you want to preview.
The channel you clicked becomes “live”, and plays video and audio for a few seconds.
- To select a channel for viewing, double-click a thumbnail.
The grid of thumbnails disappears, and the selected channel appears on your screen.



Closed Captioning

Multimedia Center TV provides closed captioning – usually available only in North America – for European television, through patent-pending translation techniques.

Displays closed captioned text over video, like a standard TV, and/or in a separate window beside the video. When you use the separate window, you can use the scroll bar to review the last few minutes of text. You can set the background color, the font, and the font color for the window.



To display closed-captioned text

-  Click the Closed Caption button in the TV control panel.
-  To close the Closed Captioning window, click the Exit button.

Closed Caption settings

The Closed Caption settings page lets you specify how closed captioned text is displayed—over video or in a window—and the background color, the font, and the font color for the window. You can also set up and enable the HotWords and TV Magazine features.

To set up closed captioning



Click the Setup button in the TV control panel, then click the **Closed Caption** tab.

Placement	<p>External Window Displays closed captioned text in its own window. Click Font... to select the display font.</p> <p>Video Window Displays closed captioned text superimposed on the video. Click Font... to select the display font.</p> <p>Solid Background Displays closed captioned text on a solid background.</p> <p>Shaded Background Displays closed captioned text on a shaded background.</p>
HotWords	<p>Enable Check to enable HotWords when Closed Captioning is on (see Hot Words™ on page 19).</p> <p>HotWords Setup Opens the HotWords settings page.</p>
TV Magazine	<p>Enable Activates TV Magazine (see TV Magazine on page 21.)</p> <p>TV Magazine Setup Opens the TV Magazine Setup Wizard.</p>
Closed Caption On Mute	<p>Display closed captioned text when the audio is muted.</p>
Show Alternate Text If Present	<p>If T1 mode closed-captioned data is present in the caption stream, checking this box displays a full page of T1 mode, scrollable, closed captioned text. If you turn off Closed Captioning or change channels, the page is hidden.</p>

Hot Words™


Have your computer watch TV for you! When you turn on Closed Captioning, you can specify words and phrases that Television will detect in the closed-captioned text.

You can set Hot Words to show the matched text, restore TV, play a sound, enable TV Magazine, or enable the Digital VCR when the Hot Words appear. You can also have TV automatically transcribe the text when the specified words appear.

You can enable Hot Words, and then minimize TV; when the specified words occur, TV opens. You specify words using the Hot Words setup button in the Closed Caption settings page.

Note Hot Words is only available in North America.

To set up Hot Words

 Click the Setup button in the Television control panel, click **Closed Caption**, then click the **HotWords Setup** button. The HotWords Setup Wizard opens.

To enable HotWords, check the **Enable** box. The HotWords Setup Wizard will guide you through HotWords setup.

First Word	Type the first word to be matched.
Match Type	Choose the type of match you want: <ul style="list-style-type: none"> • By Itself Open TV when the Hot Word occurs. • Followed by Open TV when the Hot Word occurs, and is immediately followed by the Optional Word you specify. • Not Followed By Open TV when the Hot Word occurs, if it is <u>not</u> immediately followed by the Optional Word. • In Sentence With open TV when the Hot Word occurs, if it is in a sentence with the Optional Word.
Optional Word	Type the word you want to match with the Hot Word. When you specify an Optional Word, the system only looks for the First Word+Optional Word combination.
Partial	Check this box to open TV when a <u>part</u> of the First Word occurs.
<i>Use the Add and Remove buttons to add and remove words from the list.</i>	
Actions to take when your HotWords occur.	<p>Show Matched Text Displays the text that matches your Hot Word(s).</p> <p>Restore Player Opens TV in its current state.</p>
Recording	<p>Enable TV Magazine Activates TV Magazine (see TV Magazine on page 21).</p> <p>Enable Digital VCR Activates the Digital VCR (see Digital VCR on page 32).</p>

TV Magazine

Use TV Magazine to transcribe closed captioned broadcasting, including pictures and text. You can save files as RTF (Rich Text Format), which preserves formatting, and can be used in many word processors, plain text (TXT), or Hypertext Markup Language (HTML). You can use the Schedule feature to start TV Magazine at dates and times you specify (see [Schedule](#) on page 80).

Note

- TV Magazine is only available in North America.
- When TV Magazine is enabled, it transcribes closed-captioned text even if the Closed Captioning button is off.

To start TV Magazine



Click the Setup button in the Television control panel, click the **Closed Caption** tab, then click the **TV Magazine Setup** button.

To enable TV Magazine, check the **Enable** box. The first time you use TV Magazine, the TV Magazine Setup Wizard will guide you through the setup.

File Name	Type a name for the file.
File Format	Select a file format (RTF, TXT, or HTML).
Options	<p>Overwrite files Check to overwrite existing files. Uncheck to keep existing files.</p> <p>Remove Advertising (North America only) Automatically skips commercial advertising when you display or transcribe closed-captioned text. It works best with programs that use scrolling transcripts rather than “text bubbles” to record closed-captioned text; for example: Talk shows, News broadcasts, Sports, and Soap operas.</p> <p>(Depending upon the closed-captioning format, commercials may occasionally be recorded—a little experimentation will show you how to get the best results.)</p> <p>Case Conversion Convert all characters to upper or lower case.</p>
Stop Transcribing After	Specify the number of minutes to transcribe.
Select Layout (Images are not saved with .TXT files)	<p>No image No images are saved.</p> <p>Images on Left Images are placed on the left, text on the right.</p> <p>Images on Right Images are placed on the right, text on the left.</p> <p>Alternate images Images and text alternate left and right.</p> <p>Use black & white pictures Save images as black & white, to save memory.</p> <p>Image Density 1/page 2/page 4/page</p>

Secondary Audio Program (SAP)

The Secondary Audio Program can be used to broadcast, for example, language translations, reading services for the visually impaired, weather forecasts, or information about a show.

Note Not all television stations broadcast stereo or SAP.

To hear the Secondary Audio Program




Right-click the Mute button in the Television control panel, and click **Sap** in the drop-down menu.

Zooming and panning

You can zoom in on the video in the Display panel to enlarge a selected portion of the screen, and return your display to normal. You can also pan (move the image horizontally and vertically) in the zoomed area.

To zoom

Click within the display panel, then hold down the mouse button and draw a rectangle around the area you want to zoom.

 Or, right-click the 1:1 button to open a menu where you can set the zoom level—Zoom x2, Zoom x4, or Zoom x8



To pan in the zoomed area

Move your mouse within the zoomed area to pan horizontally or vertically.

To unzoom

Right-click in the display panel to open the control menu, point at **Zooming** ►, then click **Unzoom**, or

 Click the 1:1 button in the control panel.

Video Desktop

To replace your desktop pattern with live TV display when you minimize TV



Click the Setup button in the Television control panel, click the **Display** tab, then check **Video Desktop**.



When you minimize Television, live TV display replaces your desktop.



A TV icon appears in the “tray” on the right side of the Windows[®] taskbar. Click the icon to display a small control panel that you can use to change channels and control the volume. Closed-captioned information is not displayed.

If your computer uses a RADEON or later video card, Blended Desktop and Blended Window are available. Blended Desktop blends the TV display with your desktop; Blended Window blends the TV display with the current window. You can control the mix using the blend level slider in the TV Tray

To restore your desktop pattern and TV

Click the **TV** button (or the **Video** button, if you have a Video-In card) in the Windows[®] taskbar.


Channel Lockout

Channel Lockout lets you block particular programs at specific times, and set a password to unlock them. Use the Program Lockout page to specify channel, time, and duration.

Note

- Passwords are **case-sensitive**. For example, PASSWORD, Password, and passWord are *not* the same.
- If you forget your password, you must uninstall and reinstall your TV software to view password-protected programs.

To set Channel Lockout


- 1 Click the Setup button  in the Television control panel, then click the **TV Tuner** tab.
- 2 Click the channel you want to lock, then click the **Details...** button.
- 3 Click **Channel Lockout**, then click the **Details...** button.
- 4 Click **Create New**.

The Channel Lockout Wizard guides you through the lockout procedure.



In the channel list, locked-out channels have a padlock to the right of the channel name.

To remove Channel Lockout

- 1 Click the Setup button  in the Television control panel, then click the **TV Tuner** tab.
- 2 Click the channel you want to unlock, then click the **Details...** button.
- 3 Click **Channel Lockout**, then click the **Details...** button.
- 4 Select the channel you want to unlock.
- 5 Click the **Delete** button. To remove all program locks, click the **Delete All** button.
- 6 Click **OK**.

Parental Control

Parental Control lets you restrict access to TV programs depending on their content rating. The video and audio of programs that you restrict will be scrambled until the correct password is entered.

Note

- Parental Control is only available for North American (NTSC) Television.
- Passwords are **case-sensitive**, and must be at least **three characters** in length.
- If you forget your password, you must uninstall and reinstall your TV software.
- Parental Control is only available for computer systems that have a TV tuner.
- The capture still frames feature is disabled for scrambled programs, and video capture records only scrambled material.

To use Parental Control



Right-click the Parental Control button in the Television control panel to display a menu of choices. The selected level is checkmarked.

- 1 Click the level you want.
The Set Password dialog appears.
- 2 Type your password in the upper box, then type it in the lower box to confirm it.

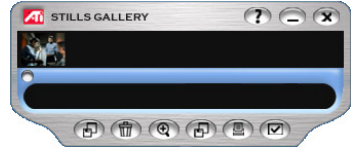
The following table summarizes the FCC guidelines for Parental Control.

Programs designed solely for children	
TV-Y	This program is designed to be appropriate for all children.
TV-Y7	This program is designed for children age 7 and above.
Programs designed for the entire audience	
TV-G	General audience.
TV-PG	Parental guidance suggested.
TV-14	Parents strongly cautioned.
TV-MA	Mature audience only.

Capturing Video and still images

Full-motion video. The Digital VCR lets you capture a clip of full-motion video plus audio from your video source and save it as an MPEG, AVI, VCR (proprietary ATI video format), or WMF (Windows Media Format for streaming and download-and-play applications) file on your computer's hard disk. See [Digital VCR](#) on page 32 for details.

Still images. Capture full-color, 24-bit-per-pixel, still images from television, save them, and print them. The images are placed in the Stills Gallery, which saves them as Windows-standard bitmaps (.bmp) or a wide variety of standard formats.



The Stills Gallery also supports most industry-standard graphics file formats, so you can insert the images into reports, presentations, letters, and other documents, to add impact to training applications and presentations. See [Stills Gallery](#) on page 52 for details.

Note

If the program is restricted by Parental Control, still capture is disabled (see [Parental Control](#) on page 26).

Recording a clip of video and audio from TV

To record a clip of video and audio



Click the Record button in the Television control panel.

The Digital VCR starts recording video and audio to an MPEG or AVI file on your computer's hard disk. For information on specifying capture formats, see *Digital VCR settings* on page 33.

To stop recording, click the Record button again. A Save As dialog opens, so you can name and save the captured video.

Note

- If the program is restricted by Parental Control, the recorded material is scrambled (see *Parental Control* on page 26.)
- You cannot record copy-protected material.

To capture still frames from Television



Click the Capture button in the Television control panel. The current frame is placed in the Stills Gallery (see *Stills Gallery* on page 52).

Note

If the program is restricted by Parental Control, Still Capture is disabled (see *Parental Control* on page 26.)

TV-On-Demand™

TV-on-Demand lets you watch delayed video while you capture live video. You can pause live TV, create instant replays, switch between the live broadcast and delayed video, all with a click of your mouse. You can also export delayed video as an MPEG-2 (.MP2) file or a .VCR file.

Note You cannot use the Digital VCR in TV-on-Demand mode or with copy-protected video sources. See [Digital VCR](#) on page 32.

To view delayed video



Click the TV-on-Demand (upper) button or the Pause (lower) button in the TV control panel.



When you click the TV-on-Demand button, the button and the control panel change to TV-on-Demand mode, live video is captured, and delayed video is displayed.



When you click the Pause button, the button and the control panel change to TV-on-Demand mode, the last frame of video is displayed, live video is captured, and delayed video is displayed. When you click the Play (lower) button, delayed video is displayed, continuing from where you paused.

Note If you do not hear TV audio, or if the audio is too low or too high, see [Troubleshooting](#) on page 84.

To return to live broadcasting



Click the Live TV button in the TV-on-Demand control panel. Video recording stops. To keep recording while you watch live TV, stay in TV-on-Demand mode and drag the slider to the right (see [To move within delayed video](#) on page 31).

To play delayed video



Click the Play button in the TV-on-Demand control panel.

To pause delayed video



The Pause button is displayed in live TV mode or in TV-on-Demand mode while delayed video is playing. When you click the Pause button, delayed video playback stops, displaying the last frame of video, TV-on-Demand continues recording live video, and the Pause button changes to the Play button.

When you click the Play button, delayed video resumes playback, and the Play button changes to the Pause button.

To change playback speed in delayed video



Click the Speed button to select playback speed: Slow Play (half-speed), Normal Play, and Fast Play (1.5x speed). Right-clicking the Speed button also displays a menu of speeds, and Go to Time lets you choose a time from which to start viewing delayed video.

- The Speed button is only enabled when you are in TV-on-Demand mode, but behind **Live**.

To skip backwards and forwards in delayed video



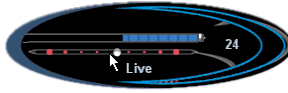
Click the left button to skip back; click the right button to skip forwards. The default settings are: forwards – 10 seconds; backwards – 30 seconds.

You can right-click the button to change the time settings to 1 frame, 10 seconds, 30 seconds, 1 minute, or two minutes.

To move within delayed video



Position slider



Jog Shuttle

Using your mouse, drag the position slider to move forwards or backwards in delayed video. As you move the slider all the way to the right, the time display indicates **Live**.

The Jog Shuttle feature provides high-speed playback — forwards or backwards. Using your mouse,

drag the slider to the right (forwards) or to the left (backwards). When you release the mouse button, the slider returns to the middle (normal speed) position. Ten speeds are available: -16x, -8x, -4x, -2x, -1x, 1x, 2x, 4x, 8x, and 16x).

To export delayed video



Click the Export button in the TV-on-Demand control panel. A dialog appears, where you can select the portion of delayed video you want to save (Range:), and the location to store it (Output File:). You can save exported video in MPEG-2 or VCR format.

- You can export more quickly if you return to live broadcast mode first (but do not return to TV-on-Demand, or you will overwrite your previously-recorded video).
- The Export button alerts you if there is insufficient video for export.

Digital VCR

The Digital VCR provides simple controls and powerful capture options. You can capture a clip of full-motion video and audio from your video source and save it as an MPEG, AVI, VCR, or WMF file. You can play captured files in the File Player (see [File Player](#) on page 75.) Advanced time-lapse and motion-triggered capture modes are available.

The Schedule feature lets you record TV programs on the dates and times you specify (see [Schedule](#) on page 80).

Note

Because TV-on-Demand (see [page 29](#)) records to your hard drive, you cannot use the Digital VCR in TV-on-Demand mode. Instead, use the Export function (see [page 31](#)) when you are in TV-on-Demand mode.

To start the Digital VCR

When you capture video from TV (see [To record a clip of video and audio](#) on page 28), the Digital VCR opens automatically. If you want the Digital VCR to prompt you before recording, click the **Prompt before Recording** checkbox in the **Digital VCR** tab of the **TV Player Setup** page (see [Digital VCR settings](#) on page 33).

Saving and compressing captured video

The Digital VCR Custom Settings... page lets you compress your captured video and save it in several industry-standard formats (see [Recording Quality](#) in [Digital VCR settings](#) on page 33). The quality of the video that you capture depends on the following conditions:

- speed of your system (CPU)
- amount of system memory (RAM)
- performance of your hard disk
- size of the video capture window
- Video codec (encoder-decoder) used

Digital VCR settings

Use the Digital VCR settings pages to specify recording quality, duration, general options, and custom settings. Advanced capture modes are available: Time-Lapse, Motion-triggered, and WMF.

To set up the Digital VCR



Click the Setup button in the TV control panel, then click the **Digital VCR** tab.

Recording Quality

(These settings are dependent upon your system configuration)

Check **DVD, Good, Longer, Video CD, or Custom**. (The higher the quality, the less video you will be able to store on a disk.)

Note: The **Video CD** setting lets you create Video-CD-compliant files that can be played on most consumer DVD players. To create a CD containing the Video CD files, you need a writable CD drive and accompanying CD creation software.

For extremely fine control, click the **Set Custom** button to open the **Custom Settings** page, where you can create and modify preset capture formats.

Click the **Create New...** button to create a new, preset capture format. The Capture Wizard guides you through the process.

Click the **Edit...** button to create a modified copy of an existing, preset capture format.

- Step 2 of the Capture Wizard provides a **deinterlacing** option. Select it to prevent horizontal streaks in captured video.

The following, advanced capture settings are available when you click the **Set Custom** button:

Time lapse capture

Capture video-only, frame-by-frame and save it to an MPEG-1 or MPEG-2 file. You can also manually trigger capture from your keyboard, mouse, or other device. You can use this feature to create stop-motion (Claymation[®]) type video.

Click the **Set Custom** button, then click **Default Time Lapse**. To edit the preset, click the **Edit** button, and follow the on-screen steps.

	<p>Motion-triggered capture Capture video and audio, triggered by motion in the video frame. This feature could be used for security applications or to record only material of interest over time.</p> <p>You can specify an optional "include" rectangle that defines the area to watch for motion, and an "exclude" rectangle that is excluded from motion detection. For example, you could monitor a room, but exclude a fish tank, which would falsely trigger capture.</p> <p>You can simultaneously perform motion-triggered and time-lapse capture, to record a minimum number of frames over time, but include real-time video when motion occurs.</p> <p><i>Click the Set Custom button, then click Default Motion Triggered. To edit the preset, click the Edit button, and follow the on-screen steps.</i></p> <p>Capture in WMF WMF capture lets you capture WMF (Windows Media™ Format) video to a file. Use these settings to capture a Windows Media file for streaming over a 56K dial-up network connection or a cable or DSL network connection.</p> <p><i>Click the Set Custom button, then click 56K Modem or Cable/DSL Modem. To edit the preset, click the Edit button, and follow the on-screen steps.</i></p>
<p>Disk Space Settings</p>	<p>Allocates the amount of disk to store captured video.</p> <p>Record to Drive Select the drive to hold captured video.</p> <p>Amount of disk space to leave free Use the slider to set the amount of space to leave on your hard drive. Use this to prevent the recording from completely filling your drive.</p>
<p>Current Settings</p>	<p>Displays the video format, size, frame rate, and audio format for captured video.</p>
<p>Capture High Resolution Stills</p>	<p>Capture still images at high resolution.</p>

**One Touch
Record
Settings****Custom duration configuration**

Type the number of days, hours, and minutes you want to record.

Folder for captured files

Choose a location for your captured files.

Captured file name

Type a name for your captured files.

File name style

Type a custom name or choose a preset from the list.

One Touch Record

One Touch Record provides one-click capture for specific times and durations. The default capture quality is used (see **Recording Quality** in *Digital VCR settings* on page 33).



Right-click the Record button in the control panel, then click the recording option that you want.

Record for	<p>30 minutes, 1 hour, 2hours Record for these preset durations.</p> <p>(xx days, yy hours, zz minutes) Specify the recording time you want.</p>
Record until (Indicated times are examples only)	<p>7:30 Record until the end of the half-hour (time shown depends upon the current time).</p> <p>8:00 Record until the end of the first hour (time shown depends upon the current time).</p> <p>9:00 Record until the end of the second hour (time shown depends upon the current time).</p> <p>The end of (show name) Record until the end of the program.</p>
Record until manually stop	Record until you click the Stop button in the Digital VCR.
One Touch Record Settings	(See <i>Digital VCR settings</i> on page 33.)
Motion Triggered Recording	Use motion triggered recording (see <i>Digital VCR settings</i> on page 33.)
Time Lapse Recording	Use time lapse recording (See <i>Digital VCR settings</i> on page 33.)
Show capture panel	Show/hide the capture panel.

Real-time MPEG encoding


If your computer uses a Pentium® II, Pentium® III, Pentium® processor with MMX technology, or an AMD Athlon™ processor, you can capture video and save it in MPEG format, in real time.

The Digital VCR Custom Settings provide four, pre-set MPEG recording settings, as well as AVI, and you can customize video and audio settings for your particular purposes.

To customize MPEG recording settings


Note

You should have a good understanding of MPEG before changing these settings. Of course, experimentation is a great teacher; if the results are not to your liking, simply click **Cancel** to return to the pre-set values.

- 1** Click the Setup button  in the TV control panel, then click the **Digital VCR** tab.
- 2** Click the **Set Custom...** button.
The Custom Settings page opens.
- 3** Select the MPEG format you want to use.
 - To change preset values, click the **Edit...** button. The Capture Wizard will guide you through making changes.
 - To create a new capture format, click the **Create New...** button. The Capture Wizard will guide you through creating the new format.

Achieving the best results with MPEG video capture

To access MPEG properties

- 1 Click the setup button  in the Television control panel, then click the **Digital VCR** tab.
- 2 In **Recording Quality**, click the **Set Custom...** button.
- 3 Click **Best Quality**, then click the **Edit...** button.
Capture Wizard (Step 1) appears.
- 4 Enter a name and description (if desired) for the preset.
- 5 Click **Next >**.
Capture Wizard (Step 2) appears.
- 6 Select MPEG-1 or MPEG-2, then click **Next >**.
Capture Wizard (Step 3) appears

To select I-frame-only MPEG capture

This uses less CPU, but requires 2 to 3 times the bit-rate, which produces larger files.

- 1 Click the **I Frames Only** button.
- 2 Click **Next>**, then click **Finish**.

To select I, B, P frame MPEG capture

This uses more CPU, but greatly reduces the bit-rate required to achieve good quality video.

- 1 In Capture Wizard (Step 3), set **Number of P Frames in Group** to **4**.
- 2 Set **Number of B Frames in Subgroup** to **2**.
(These are typical values; they can be adjusted. Clicking the **Default** button sets the above values.)

To capture with a minimum number of dropped frames in MPEG-1 or MPEG-2 format, we recommend the following settings. Example CPU speeds and bit rates (Mbps) are given, but note that some video compresses better than others, depending on the amount of rapid motion and the number of complex scenes.

Video Format	IBP Frames (Mbps)	Minimum CPU Required	I-Frame Only (Mbps)	Minimum CPU Required
160x120	1.0	P200-MMX	1.0	P200-MMX
352x240	1.5	PII-266	2.0	P200-MMX
320x480	3.0	PII-400	4.0	PII-266
640x480	4.0	Athlon 600	6.0	PIII-450
720x480	4.0	Athlon 700	6.0	PIII-450

Mbps = Megabits per second, or millions of bits per second.
1 Mbps is approximately 125Kbytes/second.

- The motion estimation slider can be used to control the video quality – a high setting (15 or more) uses more CPU, but provides better quality video. A low setting (5 or less) speeds up encoding, but produces lower quality video at a given bit-rate.
- The above bit-rate settings are based on a motion estimation setting of 10.
- If your system is not capable of achieving smooth-looking video at 29.97, try the following:
 - Capture I frames only
 - Capture using a smaller frame size
 - Capture video only, with no audio
 - MPEG-2 is best suited for Digital VCR use.

MPEG-1 decoders are widely used, so video encoded in MPEG-1 format can be played on many PCs. However, MPEG-1 playback on a PC uses the Microsoft MPEG-1 decoder, which may not provide the best performance.

MPEG-2 playback on a PC requires an MPEG-2 decoder. With ATI graphics cards, MPEG-2 decoders use the ATI hardware IDCT and motion compensation, which provides higher resolution video playback and less CPU loading than the Microsoft MPEG-1 decoder.

Media Library

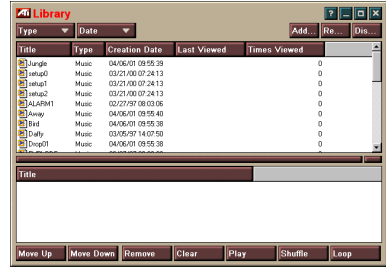
The Media Library provides a convenient way to manage and play all your multimedia files. When you record video or audio, it is added to the Media Library.

You can scan directories for multimedia content, filter by file type and date, set up playlists, and convert ATI-proprietary .VCR files to MPEG-2 format.

The upper window contains the multimedia content that the Media Library found in the specified directory. You can drag files from the upper window into the lower window to create playlists of various multimedia files.

Note

Media Library does not track files on removable media, such as CDs.



To start the Media Library



Click the Media Library icon in the taskbar tray.

TV Listings



Gemstar's GUIDE Plus+™ is an electronic television programming guide for Microsoft Windows. It provides advanced program information, such as station names and numbers, as well as program names and details.

You can schedule recording and viewing sessions, search for programs, and maintain a list of your favorite shows. For more information, see the TV Listings Help.

Note

- TV Listings is only available in selected countries.
- Before you use TV Listings for the first time, it is recommended that you complete the TV Initialization Wizard (see [Setting up TV](#) on page 6).
- You need an internet connection to download the TV listings to your computer.
- Running GuidePlus+ weekly will keep your TV listings current.

To start TV Listings

Click the TV Listings button in the TV control panel, or click **TV Listings** in the LaunchPad.



To access TV Listings information from TV

- When you Autoscan, TV Listings provides station names (see *Autoscan* in [TV Tuner settings](#) on page 11.)
- When you change channels, the current program name, and the station name and number are displayed.
- When watching TV, right-click the TV Listings button to get the following options:

TV Program Details If TV Listings has information about this program, it displays a panel containing detailed program information.

- **Auto Update** As time passes, or as you change channels, the TV Program Details panel updates its program information.

- **Copy** Check this to copy the TV Program Details panel's information into your Windows clipboard.
- Right-clicking in the text area of the TV Program Details panel also provides access to the **Auto Update** and **Copy** features.

Note

When you use TV Listings, the TV Control panel is hidden and the some following features are unavailable:

TV Listings is unavailable when you use Channel Surf (see [page 16](#)) or video capture (see [page 27](#)).

Setting up TV Listings

Registration

The first time you launch the GUIDE Plus+ system, you will need to register. This allows you to download the listings for your area or cable service.

To download updated listings

- 1** In the **File** menu, click **Download Weekly File ...**
The Download Assistant opens.
- 2** Click the **Download** button to download the listings.
To make changes, click the **Change Settings** button.

To customize channels

The **Edit** menu contains two features related to the channel list:

- **Station Lists ...** lets you create and maintain a list of stations, based on the master list for your area or cable service.
- **Channel Number ...** lets you assign and maintain channel numbers for each station.

Getting around

To navigate the various TV Listings views, click the tab for the view you want, or select the appropriate view from the **View** menu at the top of the screen.

Use the mouse or cursor keys to move within the current view. Left-click to select an item and display its details in the details window above the grid or log.

Right-click to open a pop-up menu with various options:

Watch	Adds the item to your Watch schedule (see Schedules tab on page 48).
Record	Adds the item to your Record schedule (see Schedules tab on page 48).
Favorite	Adds the item to your Favorites list (see Favorite search on page 46).
Program Details	Opens a window that includes a detailed description of the program, as well as additional air dates.
Go To	Tunes the PIP (Picture-In-Picture—the window in the upper left corner of the guide where the TV picture is displayed) to the selected station.

Recording

TV Listings works with your TV tuner to automatically record shows. When you select a program to record, a pop-up window appears, requesting a file name and location to save the file.



When you select a program for recording, the Record icon appears next to the title in any view where that program is displayed.

- Record
 • To remove a program from the Record Schedule, simply click the Record icon next to the program title.

Viewing

TV Listings works with your TV tuner to automatically display shows. When you select a program for viewing, the Watch icon appears next to the title in any view where that program is displayed.



- To remove a program from the Watch Schedule, simply click the Watch icon next to the program title.

Views

There are two, main views for the guide: **Grid** and **Log**.

Grid view displays 24 hours of listings in a table (similar to your newspaper or cable guide). Use the arrow keys to scroll up, down, left, or right. You can also scroll using the horizontal and vertical scroll bars.

- Scroll to a specific program to display its details in the area above the grid.
- To display just the stations you want, use the **Station Lists ...** option in the **Edit** menu (see *To customize channels* on page 42.)

Log view displays the data in a list, in the following order: Date/Station/Category and Title/Episode. Use the arrow keys to scroll up, down, left, or right. You can also scroll using the horizontal and vertical scroll bars.

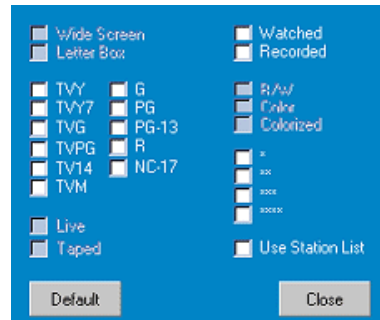
- Scroll to a specific program to display its details in the area above the log.
- To display just the stations you want, use the **Station Lists ...** option in the **Edit** menu (see *To customize channels* on page 42.)

Filter options



Click the Filter icon to open the Filter options dialog, where you can adjust the current view and quickly locate programs. Select the boxes you want to apply to the current view, and click **Close**.

Select the **Use Station List** checkbox to apply the most recently customized station list.



Actors tab

The Actors tab displays all actors and actresses starring in all the movies in the current listings. A list of actor names is displayed on the left of the screen. Click the name of the actor for whom you want to display all movies and show times.

- Use the arrow keys to scroll up and down in the Actors List.
- You can also type an actor's partial or full name in the textbox above the Actors List to quickly locate that actor.
- Scroll to a specific program to display its details in the area above the list.
- To display just the stations you want, use the **Station Lists ...** option in the **Edit** menu (see *To customize channels* on page 42).

Categories tab

The Categories tab displays all genre categories in the current listings. A list of genre categories is displayed on the left of the screen.

- Click the category you want to view, to display all titles for that category on the right side of the screen.
- Double-clicking on categories with a + sign opens a list of sub-categories on the right side of the screen.
- Use the arrow keys to scroll up and down in the Categories List. You can also scroll using the horizontal and vertical scroll bars.
- Scroll to a specific program to display its details in the area above the log.
- To display just the stations you want, use the **Station Lists** option in the **Edit** menu (see *To customize channels* on page 42).

Searches

GUIDE Plus+ comes with a powerful search engine to help you find the programs you want. You can save and maintain a list of custom searches to run each week, as well as a Favorites search that tracks your favorite shows and movies.

Favorite search

Access the Favorite search under the **Searches** tab. Favorites are a special list of show titles that you keep and use to find your favorite shows with a mouse click. You can add and remove items from your favorites list from any view in the guide.

- Favorites is always the first search displayed in the Searches tab. It behaves like other searches, but it cannot be deleted.
- When one of your favorites appears in any view of the guide, 😊 appears in front of the title.

Typically, you use the favorites list to find your preferred shows when your data file is updated. Select the Favorites search from the list of searches, and the guide will look up and display all your favorite items. You can then select any or all of these items into your Schedule. You can set Favorites in two ways:

- In any view, select an event you want to place in your Favorites list. Right-click to open the **Event** menu, then select the **Favorite** option to toggle the item in or out of your Favorites list.
- In any list of events, three checkboxes appear in front of the event. The right checkbox is the Favorites indicator; click to toggle it.

Movies tab

The Movies tab displays all movie sub-categories for all movies in the current listings, on the left side of your screen.

- Click the category you want to view; all titles for that category will be displayed on the right side of your screen.
- Use the arrow keys to scroll up and down in the Movies List. You can also scroll using the horizontal and vertical scroll bars.
- Scroll to a specific program to display its details in the area above the log.
- To display just the stations you want, use the **Station Lists ...** option in the **Edit** menu (see *To customize channels* on page 42).

Schedules tab

A schedule is a list of TV events that you have selected in any view, including search results. The schedule is in the form of a Log View (see [page 44](#)). There are three lists you can choose from:

- **Watch** displays all events with at least the Watch indicator set.
- **Record** displays all events with at least the Record indicator set.
- **All** displays all events with either the Watch or Record indicator set.

In any view, when an event has been scheduled, an icon appears in front of the title, indicating whether the item is scheduled to watch, record, or both. Scheduled items can be added and removed in two ways:

- 1** In any view, select the event you want to place in your schedule, right-click to open the **Event** menu, then select **Watch** or **Record** to toggle the item in or out of your list of scheduled items.
- 2** In any list of events, three checkboxes appear in front of the event; the left checkbox is the Watch indicator, and the center checkbox is the Record indicator. Click either one to toggle it.

Searches tab

The Searches tab displays a list of saved searches, including a list of personal Favorites (see [Favorite search](#) on page 46), which is always the first search in the list. The Search title is automatically updated when you click it.

- To create a new search, click the **Search** menu, then click **New Search**. The Search dialog opens.
- To edit a saved search, double-click the search title, or launch the Search dialog (as above), then click **Load Search**.

Setting search parameters

To start a new search, in the **Search** menu, click **New Search ...** to open the Search dialog, which you can use to set the following options:

Stations	Select All or None using the appropriate buttons at the bottom of the list. To use selected stations, click the station names to highlight them.
Program Categories	Select All or None using the appropriate buttons at the bottom of the list. To use selected categories, click the category names to highlight them.
Date/Time Ranges	Use the pull-down items to select date ranges, and the check boxes to select the hours you wish to include in your search.
Rating	Highlight one or more entries in this list to search for movies with specific quality ratings.
MPAA	Highlight one or more entries in this list to search for movies with specific MPAA ratings.
Parental Guidance	Highlight one or more entries in this list to search for movies with specific ratings.
Text Search	Enter names, titles, and/or keywords in the text box. Check the Title , Desc , and/or Performers boxes to search the appropriate fields for the text.
Year of Release	Use the pull-down items to search for movies before, after, or within specific years.

Use the icons at the top of the Search dialog to:

- Create a new search
- Load an existing search
- Save the current search criteria
- Run the current search
- Exit the search dialog

Sports tab

The Sports tab displays all sports sub-categories for all sporting events in the current listings, on the left side of your screen. Click the category on the left side of the screen for which you want to display all titles. Titles will appear on the right side of the screen.

- If you have the **Use Station List** checkbox in the Filter options checked (see *Filter options* on page 45), only those stations in the currently-selected station list are displayed.
- Use the arrow keys to scroll up, down, left, or right. You can also scroll using the horizontal and vertical scroll bars.
- Scroll to a specific program to display its details in the area above the log.
- To display just the stations you want, use the **Station Lists ...** option in the **Edit** menu (see *To customize channels* on page 42).

Stations tab

The Stations tab displays listings for each station, on the left side of your screen. Click the station you want, or use the arrow keys to move up or down the list. The listings for that station are displayed on the right side of your screen.

There are two ways to view listings in the Stations tab. You control how the listings are displayed via the Stations tab **Format** option. **Log view** is the standard view. Each station is shown in its own, rolling log. **Grid view** can be activated from the **Grid Mode** option of the **View** menu (see *Views* on page 44). Each station is shown as a 24-hour grid.

- Use the arrow keys to scroll up or down. You can also scroll using the horizontal and vertical scroll bars.
- Scroll to a specific program to display its details in the area above the list.
- To display just the stations you want, use the **Station Lists** option in the **Edit** menu (see *To customize channels* on page 42).

Titles tab

The Titles tab displays all titles in the current listings, on the left side of your screen. Click a title to display all show times for that title, on the right side of your screen.

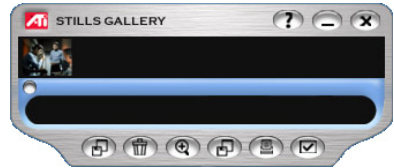
- Use the arrow keys to scroll up or down. You can also type a partial or full Title name in the textbox above the Title list, and quickly jump to a particular title.
- Scroll to a specific program to display its details in the area above the log.
- To display just the stations you want, use the **Station Lists ...** option in the **Edit** menu (see [To customize channels](#) on page 42).

Days and dates

Each view contains listings for the current date. To change the date, select the date you wish to view from the **Dates** menu at the top of the screen.

Stills Gallery

The still images you capture from TV, Video CD, or File Player are saved in the Stills Gallery. You can save images in a variety of graphics formats and sizes. The Stills Gallery controls let you delete images, hide them, save them as wallpaper, and print them.



You can check multiple Capture options in the Stills Gallery Setup page. Still images can be captured to the Stills Gallery, numbered files, clipboard, and printer, all at the same time.

Note If you close the Stills Gallery without saving, your captured still images are **deleted**.

When you click the logo in the upper left corner of the Stills Gallery, the “About...” notice appears. If you have more than one Multimedia Center feature installed, a Task menu displays available and active features.

For information about using the Stills Gallery controls, see the online help and Tool Tips.

Stills Gallery settings

Use the Stills Gallery Setup page to define how the Stills Gallery saves and prints captured images.

To set up the Stills Gallery



Click the Setup button in the Stills Gallery, TV, File Player, or Video CD control panel, then click the **Stills Gallery** tab.

Capture Options	<p>Capture to Gallery Captures still images to the Stills Gallery.</p> <p>Capture to numbered file Stores captured images in numbered files (pic001.bmp, pic002.bmp ...) on your hard disk.</p> <p>Capture to clipboard Places captured images on the Windows Clipboard.</p> <p>Capture to printer Send the captured image to the printer.</p> <p>Use only 256 colors Saves captured images as 256-color files, to save memory.</p>						
Save Options	<p>Warn if closed without saving Alerts you if you close Television or the Stills Gallery without saving captured images.</p> <p>Show paths of saved images Displays the drive, folders, and subfolders that contain saved images.</p>						
Tool Tips	<p>Show Tool Tips Display tool tips for the Stills Gallery controls.</p> <p>Show Short Cut Display shortcut keys for the Stills Gallery controls.</p>						
Always on top	<p>Keep the Stills Gallery on top of other applications.</p>						
Print Options	<p>Center image Print image in center of page.</p> <p>Image size:</p> <table border="0"> <tr> <td>Maximize</td> <td>Print in full-page format.</td> </tr> <tr> <td>One to one</td> <td>Print same size as original.</td> </tr> <tr> <td>Double</td> <td>Print twice original size.</td> </tr> </table>	Maximize	Print in full-page format.	One to one	Print same size as original.	Double	Print twice original size.
Maximize	Print in full-page format.						
One to one	Print same size as original.						
Double	Print twice original size.						

CD Audio

Use CD Audio to play standard audio CDs. Advanced features such as Random play, Intro play (which plays the first ten seconds of each track) and Loop play are available. The Schedule feature lets you schedule CD playback on dates and times you specify (see [Schedule](#) on page 80).



When you click the logo in the upper left corner of the display panel, the “About...” notice appears. If you have more than one feature installed, a Task menu displays available and active features.

For information about using CD Audio controls, see the online help and Tool Tips.

To start CD Audio

from LaunchPad



Click CD Audio in the Launchpad. For information on LaunchPad, see [page 2](#).

from Windows® taskbar

- 1** In the Windows taskbar, click **Start**.
- 2** Point at **Programs** ►.
- 3** Point at **ATI Multimedia Center** ►.
- 4** Click **CD Audio**.



You can also start CD Audio from other Multimedia Center features. Click the ATI logo in the upper left corner of the feature’s control panel, then click **CD Audio**.

CD Audio settings

Use the CD Audio Settings page to set up playlists and shuffle play, and to use an LCD panel for track number and playback time.

To set up CD Audio



Click the Setup button in the CD Audio control panel, then click the **CD Player Settings** tab.

Play List	Displays all tracks in the playlist (the list of your selections).
Shuffle Play	<p>Shuffle all tracks Play all tracks in random order.</p> <p>Shuffle user playlist Play playlist in random order.</p>
Disc Information	If the information is available, displays the name of the disc and the artist. You can also type in the information.
Available Tracks	Displays the tracks that you can add to the playlist. Use the buttons to add or remove selected tracks or all tracks.
LCD Display	Check to display track number and current playback time on an LCD display.
Tool Tips	<p>Show Tool Tips Display tool tips when you point at a control with your mouse.</p> <p>Show Shortcut Display keyboard shortcuts when you point at a control with your mouse.</p>



CD Database

If you are connected to the Internet, you can use the CD Database to display album title, artist, song names, and other information on your computer as your CD plays.

When you put an audio CD in your CD-ROM drive, the CD Audio program can query a global CDDB[©] server for information about the disk. If the database contains information for your disk, CD Audio downloads and displays the data.

- Access to the CDDB service is free of charge to end-users.

To open the CD Audio CD Database page

-  Click the CD Database button in the control panel, or
-  Click the Setup button in the CD Audio control panel, then click the **CD Database** tab.


<p>Server Address of CDDB server (default: cddb.cddb.com)</p>	<p>Port Port to use with this CDDB server (default: 8880).</p> <p>Get Sites List from Server Get sites list from server using current settings.</p>
<p>Protocol</p>	<p>CDDBP Use direct TCP/IP connection.</p> <p>HTTP Use the HTTP connection if you are behind a firewall. A CGI script must be defined (default: /-cddb/cddb.cgi)</p>
<p>Proxy Server Access the database using a proxy server</p>	<p>Server Address of proxy server (a proxy server is another computer on your LAN that connects to the Internet without compromising the security of your network).</p> <p>Port Port to use with proxy server.</p> <p>Requires Proxy Authentication This proxy server requires authentication.</p>

Dial-Up Networking Use dial-up networking when accessing the server.	Use this connection when making remote queries When not connected, connect using this entry. Only perform remote queries when connected Access the database only when already connected.
Disable CD Database	No queries are performed when this box is checked.

CD Audio Schedule settings

You can schedule CD Audio to play on the dates and times you specify. If you have the features installed, you can also schedule events for TV Magazine, Digital VCR, File Player, and TV.

To open the CD Audio Schedule settings page

 Click the Setup button in the CD Audio control panel, then click the **Schedule** tab. The Schedule Wizard will guide you through creating new scheduled events. See [Schedule](#) on page 80 for details.

Video CD

Video CD plays Video CD 1.0 CDs, Video 2.0 Interactive CDs, and Karaoke CDs.

When you click the logo in the upper left corner of the display panel, the “About...” notice appears. If you have more than one feature installed, a Task menu displays available and active features.



For information about using Video CD controls, see the online help and Tool Tips.

To start Video CD


from LaunchPad



Click the Video CD icon in the Launchpad. For information on LaunchPad, see [page 2](#).

From Windows® taskbar

- 1** In the Windows taskbar, click **Start**.
- 2** Point at **Programs** ►.
- 3** Point at **ATI Multimedia Center** ►.
- 4** Click **Video CD**.

 You can also start Video CD from other Multimedia Center features. Click the ATI logo in the upper left corner of the feature’s control panel, then click **Video CD**.


Video CD Control menu

You can access Video CD functions by right-clicking on the video viewing area or the control panel. This is very useful in full-screen mode. The following menu items are available:

Setup	Open the Video CD setup page.	
Eject CD	Eject the video CD from the drive.	
Play	Play the loaded Video CD.	
Pause	Pause playback.	
Stop	Stop playback.	
Display Size	50%	Display video at 1/2 size.
	75%	Display video at 3/4 size.
	100%	Display video full size.
	200%	Display video at double size.
	Full Screen	Display video in full screen, no borders.
Show Controls	Display the Control panel.	
Audio Channels	Click to select audio tracks for dual-mode MPEG CDs:	
	Stereo	Stereo audio playback.
	Both Channels	Both audio channels active.
	Left Channel	Left channel audio only.
	Right Channel	Right channel audio only.
Movie Scale	Show Time	Display scale in time.
	Show Frames	Display scale in frames.
	Time Remaining	Display time remaining in current CD.
	Total Time	Display total time of current CD.
Zoom	Unzoom	Return to normal display.
	Zoom 2x	Zoom to double size.
	Zoom 4x	Zoom to 4 times size.
	Zoom 8x	Zoom to 8 times size.
About...	Display the About... dialog.	
Exit	Close the Video CD program.	

Capturing still frames from Video CDs

To capture still frames from Video CDs

 Click the Capture button in the Video CD control panel. The current frame is placed in the Stills Gallery (see [Stills Gallery](#) on page 52).


Zooming and Panning

You can zoom in on the video in the Display panel to enlarge a selected portion of the screen, and return your display to normal.



To zoom in

Click within the display panel, then hold down the mouse button and draw a rectangle around the area you want to zoom.

 Or, right-click the 1:1 button in the control panel to open a menu where you can set the zoom level— Zoom x2, Zoom x4, or Zoom x8.

To pan in the zoomed area


Click and drag your mouse within the zoomed area to pan horizontally or vertically.

To zoom in the zoomed area

Hold down the Shift key, and draw another rectangle in the zoomed area.

To unzoom or use predefined zoom levels


Right-click in the display panel to open the Control Menu (see [Video CD Control menu](#) on page 59), then click Zoom, and select Unzoom, Zoom x2, Zoom x4, or Zoom x8.

-  Or, click the 1:1 button to unzoom, or right-click the button to open a menu where you can set the zoom level — Zoom x2, Zoom x4, or Zoom x8.

Video CD Display settings

Use the Video CD Display settings pages to set up video size and general operation.

To open the Video CD Display settings page

-  Click the Setup button in the Video CD control panel, then click the **Display** tab.

Video Size	Choose playback size: 50%, 75%, 100%, 200%, or Fullscreen. If the current panel does not support resizing, the values are greyed-out.
Tool Tips	<p>Show Tool Tips Show tool tips when you point at controls with your mouse.</p> <p>Show Shortcuts Show keyboard shortcuts when you point at controls with your mouse.</p>
Always on top	Keep Video CD on top of other applications.
Keep Aspect Ratio	Maintain the width-to-height ratio when you resize or zoom the display.
Autohide Controls in Full screen	Automatically hide Video CD controls when playing full-screen.

Video CD Preferences settings

Use the Video CD Preferences settings page to set up general characteristics for your player.

To open the Video CD Preferences settings page



Click the Setup button in the Video CD control panel, then click the **Preferences** tab.

Movie Scale	<p>Show Time Display scale in time.</p> <p>Show Total Time Display the total time of the playing video CD or file.</p> <p>Show Time Remaining Display the remaining time in the playing video CD or file.</p>
General Settings	<p>Automatically play CD if present Automatically play a loaded CD.</p>
Power Management	<p>Select one of the following levels:</p> <p>Always Power management always enabled.</p> <p>Disabled while playing Power management is disabled while a CD is playing.</p> <p>Allow display to turn off while paused Only the display turns off when playback is paused.</p> <p>Disabled Power management is never enabled.</p>

Video CD Stills Gallery settings

You can capture still images from Video CDs, and save them in the Stills Gallery.

To open the Video CD Stills Gallery settings page



Click the Setup button in the Video CD control panel, then click the **Stills Gallery** tab. For information on the Stills Gallery, see [Stills Gallery](#) on page 52.

DVD

DVD (Digital Versatile Disc) is a high-density format that provides as much as 17 Gigabytes of storage—25 times more than a CD-ROM. This vastly increased capacity lets you view a full-length movie or play games that used to require multiple CDs.



When you click the logo in the upper left corner of the display panel, the “About...” notice appears. If you have more than one feature installed, a Task menu displays available and active features.

For information about using the DVD controls, see the online help and Tool Tips.

To start DVD


from LaunchPad



Click DVD in the Launchpad. For information on LaunchPad, see [page 2](#).

from Windows® taskbar

- 1** In the Windows taskbar, click **Start**.
- 2** Point at **Programs** ►.
- 3** Point at **ATI Multimedia Center** ►.
- 4** Click **DVD**.

 You can also start DVD from other Multimedia Center features installed on your system. Click the ATI logo in the upper left corner of the feature’s control panel, then click DVD.

What can I play on my DVD drive?

You can play all video discs that conform to the DVD Video Disc 1.0 specification, including encrypted (copy-protected) and interactive titles.

Sizing the Video Display panel

You can resize the video display panel by using your mouse to drag an edge, and you can use the ALT or CTRL key to display these preset screen sizes:

50% of original size.	Alt / Ctrl+1
75% of original size.	Alt / Ctrl+2
100% of original size.	Alt / Ctrl+3
Toggle full-screen	Alt / Ctrl+4 Full screen
	Ctrl+F Toggle full screen
	Esc Exit full screen

Full-screen controls

When you play DVD discs in full-screen



mode, the player controls appear at the bottom of your screen. You can use the following keys to return to windowed video, and hide or show the on-screen controls.

Alt / Ctrl + F	Toggle full-screen mode.
Esc	Exit full screen mode.
F2	Hide / Show the on-screen controls.

Playing DVD Video Disks

All DVD players and drives will read **audio CDs** and **CD-ROMs**, and play music from **Enhanced CDs** (CD Plus, CD Extra).

To play DVD discs

Place a DVD disk in your DVD drive, then click the Play DVD button in the File Open dialog.

Selecting audio channels



When you view a standard DVD Video disc that has multiple audio streams, clicking the audio channel button displays a pop-up menu of available audio streams. The currently-playing channel is checkmarked.

- DVD Video Discs can support up to eight audio channels, but not all discs provide them.

Setting up sub-titles



Click the sub-title selection button in the DVD control panel to display a menu of sub-title language choices. Click the language you want for sub-titles. The selected language is checkmarked.

- DVD Video Discs support up to thirty-two sub-title languages.

Using the menus



Click the Menu button in the DVD control panel. A pop-up “menu of menus” opens, where you can select a menu to jump to. Standard DVD Video Discs provide up to six menus:

- Title (usually, a whole movie or album)
- Root
- Audio
- Sub-picture (sub-pictures overlay the video, and are used for sub-titles, karaoke, menus, simple animation, etc.).
- Angle
- Chapter

Searching DVD disks

DVD Video Disc content consists of “titles” (movies or albums), and “parts of titles” (chapters or songs). Use Search to go to a specific location on the disc.



Click the Search button in the DVD control panel to open the search dialog. You can search DVD discs for:

- Title (usually a whole movie)
- Title and Chapter (a Chapter is part of a Title).
- Time within the current Title and Chapter in HH:MM:SS:FF format (HH=hour, MM=minute, SS=second, FF=frame).

You can also use the DVD Control Menu to search for titles and chapters (see [DVD Control menu](#) on page 69).


Selecting viewing angle



Click the Angle button in the DVD control panel to display a menu of camera angles. The selected angle is checkmarked.

- Not all DVD Video Discs support multiple viewing angles; the DVD content must be encoded with multiple viewing angles for this feature to be active.

Parental Control

 Parental Control lets you restrict access to selected material by requiring password access. Click the Parental Lockout button in the DVD control panel to display a menu of parental level choices. The selected level is checkmarked.

- When a parental level is selected, a password dialog appears. A password is required to change parental levels.


Zooming and Panning

You can zoom in on the video in the Display panel to enlarge a selected portion of the screen, and return your display to normal.

To zoom in

Click within the display panel, then hold down the mouse button and draw a rectangle around the area you want to zoom.



 Or, right-click the 1:1 button to open a menu where you can set the zoom level— Zoom x2, Zoom x4, or Zoom x8.

To pan in the zoomed area


Click and drag your mouse within the zoomed area to pan horizontally or vertically.

To zoom in the zoomed area

Hold down the Shift key, and draw another rectangle in the zoomed area.

To unzoom or use predefined zoom levels

Right-click in the display panel to open the Control Menu (see [DVD Control menu](#) on page 69), then click Zoom, and select Unzoom, Zoom x2, Zoom x4, or Zoom x8.

 Or, click the 1:1 button to unzoom, or right-click the button to open a menu where you can set the zoom level — Zoom x2, Zoom x4, or Zoom x8.

DVD Control menu


As well as using the control panel buttons, you can access DVD functions by right-clicking on the video viewing area or the control panel. This is very useful when you play files in full-screen mode. The following menu items are available:

Setup	Opens the Preferences page.
Hide controls	Hides the full-screen controls (see Full-screen controls on page 64).
Eject	Opens/closes the DVD drive tray.
Resume	Continues play, after pausing
Play/Pause	Toggles between play and pause.
Stop playing	Stops play.
Play at specific part	Search for a specific location on the disc (see Searching DVD disks on page 66).
Restart program	Starts play at the beginning of the file.
Go Up	Goes up in a playlist.
Menu	Displays a “menu of menus” (see Using the menus on page 66).
Subtitle	Displays a menu of subtitle language choices (see Setting up sub-titles on page 65).
Audio	Displays a menu of audio streams (see Selecting audio channels on page 65).
Angle	Displays a menu of camera angles (see Selecting viewing angle on page 66).
Parental Control	Displays a menu of parental level settings.
Search	Search for any title or chapter.
Zoom	Zoom 2x, 4x, 8x, Unzoom.
About...	Displays the About... dialog.
Exit	Closes DVD.

DVD display settings

The Display settings page lets you control how video is displayed in DVD.

To open the Display settings page

 Click the Setup button in the DVD control panel, then click the **Display** tab.

Display Size	Display video at 50%, 75%, 100%, or full screen.
Layout Preference Some discs may not support the layout you select. For example, selecting Wide Screen for a disc that contains only Pan Scan data will not produce wide screen playback.	<p>If the DVD video disc contains the appropriately formatted content, DVD video can be displayed with a width-to-height ratio of 4:3 (standard TV shape) or 16:9 (widescreen).</p> <p>Wide screen Displays the full image with a width-to-height ratio of 16:9, like a movie screen (for wide-screen TVs).</p> <p>Letterbox Displays the image with top and bottom borders (in 4:3 format, for a shorter but full-width image).</p> <p>Pan Scan Displays a 16:9 image formatted to fit a standard 4:3 screen; the image is full-height and 75% of the full width.</p>
Options	<p>Keep Aspect Ratio Maintains the aspect ratio (width-to-height ratio) when you resize the display.</p> <p>Always on Top Always displays the player on top of other windows.</p> <p>Auto Hide in Full Screen Automatically hides controls in full-screen mode if no user interaction occurs. Controls automatically re-appear if you move the mouse.</p>
Tool Tips	<p>Show Tool Tips Displays helpful aids for using DVD.</p> <p>Show Shortcut Displays shortcut keys.</p>

DVD Preferences settings

The Preferences settings page lets you control how video is displayed in DVD.

To open the Display settings page




Click the Setup button in the DVD control panel, then click the **Preferences** tab.

Preferred Language	<p>Select a 1st choice and a 2nd choice for your preferred language.</p> <ul style="list-style-type: none"> • DVD automatically selects the audio stream and sub-titles to match the 1st choice. • If the 1st choice is not available, the 2nd choice is used. • If neither 1st or 2nd choice is available, the player uses the first available audio and sub-picture stream. • You can use the Sub-titles button to change languages during playback (see Setting up sub-titles on page 65).
Power Management	<p>Select one of the following levels:</p> <ul style="list-style-type: none"> • Always (power management always enabled). • While not playing • Display to turn off while paused (only the display turns off when playback is paused). • Never
Enable Subtitles Always	<p>Always display subtitles.</p>
Show Subtitles When Muted	<p>Display subtitles whenever the audio is muted.</p>

DVD Video settings

The Display Settings page lets you adjust video characteristics. Your hardware will determine which settings are available.

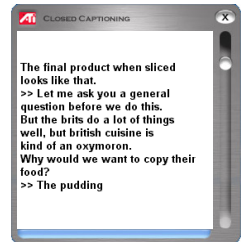
To open the DVD Video settings page

 Click the Setup button in the DVD control panel, then click the **Video** tab, and use the sliders to adjust your display.

Brightness	Adjusts the intensity of light in your display.
Gamma	Adjusts the color brightness of your display. The higher the gamma, the higher the brightness and contrast, with maximum being a flat (unmodified) setting.
Saturation	Adjusts the richness of color (determined by the amount of grey in a color) in your display.



DVD Closed Captioning

Display closed captioned text over video, and/or in a separate window beside the video. When you use the separate window, you can use the scroll bar to review the last few minutes of text. You can set the background color, the font, and the font color for the window.



Note Closed-Captioning is only available in North America.

To display closed-captioned text

-  Click the Closed Caption button in the DVD control panel.
-  To close the Closed Captioning window, click the Exit button.

Closed Caption settings

The Closed Caption settings page lets you specify how closed captioned text is displayed—over video or in a window—and the background color, the font, and the font color for the window.

To set up closed captioning



Click the Setup button in the DVD control panel, then click the **Closed Caption** tab.

Placement	<p>External Window Displays closed captioned text in its own window. Click Font... to select the display font.</p> <p>Video Window Displays closed captioned text superimposed on the video. Click Font... to select the display font.</p> <p>Solid Background Displays closed captioned text on a solid background.</p> <p>Shaded Background Displays closed captioned text on a shaded background.</p>
Closed Caption On Mute	<p>Display closed captioned text when the audio is muted.</p>

DVD Schedule settings

If you have the features installed, you can schedule events for TV Magazine, Digital VCR, File Player, and TV.

To open the DVD Schedule settings page



Click the Setup button in the DVD control panel, then click the **Schedule** tab. The Schedule Wizard will guide you through creating new scheduled events. See [Schedule](#) on page 80 for details.

Region codes

There are six region codes, or “country codes”, which are used to prevent playback of certain discs in certain geographical regions. DVD players will not play discs that are not allowed in the region.

If you insert a DVD disc whose region code is different from the currently-set value, a dialog appears where you can change the region code for your location.

<i>You can only change Region Codes five times.</i>	
Region 1	The U.S., U.S. territories and Canada.
Region 2	Europe, Japan, the Middle East, Egypt, South Africa, Greenland.
Region 3	Taiwan, Korea, the Philippines, Indonesia, Hong Kong.
Region 4	Mexico, South America, Central America, Australia, New Zealand, Pacific Islands, Caribbean
Region 5	Russia, Eastern Europe, India, most of Africa, North Korea, Mongolia.
Region 6	China

File Player

Use the File Player to play various multimedia file formats. The types of file you can play depends on your system's software. For example, MPEG-2 file playback is available if software such as ATI's DVD Player is installed.

You can play the following, multimedia files:

- AVI
- MPEG (.mpg, .mpeg)
- MP (.mp3, .mp2)
- MIDI (.mid)
- WAV (.wav)
- VCR (.vcr: proprietary ATI video format – digital VCR files recorded from the Multimedia Center TV feature)

Note

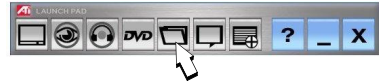
When you play MP, MIDI, or WAV files, the video panel does not appear.



For information about using File Player controls, see the online help and Tool Tips

To start File Player

from LaunchPad



Click File Player in the Launchpad. For information on LaunchPad, see [page 2](#).

from Windows® taskbar

- 1 In the Windows taskbar, click **Start**.
- 2 Point at **Programs** ►.
- 3 Point at **ATI Multimedia Center** ►.
- 4 Click **File Player**.

File Player Control menu

You can access File Player functions by right-clicking on the video viewing area or the control panel. This is very useful when you play files in full-screen mode. The following menu items are available:

Setup	Open the File Player Setup page.
Hide/Show Controls	Hide the File Player Control panel.
Play	Play the current file.
Stop	Stop playing.
Time display mode	Set time mode: Elapsed Time Remaining Time Total Time
Zoom Mode	Set Zoom: Unzoom, Zoom 2x, Zoom 4x, Zoom 8x.
Video Size	Set playback size: 50%, 75%, 100%, 200%, Full Screen.
About...	Displays the "About" dialog.
Exit	Closes the File Player.

Zooming and Panning

You can zoom in on the video in the Display panel to enlarge a selected portion of the screen, and return your display to normal.

To zoom in

Click within the display panel, then hold down the mouse button and draw a rectangle around the area you want to zoom.



1:1 Or, right-click the 1:1 button to open a menu where you can set the zoom level— Zoom x2, Zoom x4, or Zoom x8.

To pan in the zoomed area

Move your mouse within the zoomed area.

To zoom in the zoomed area

Hold down the Shift key, and draw another rectangle in the zoomed area.

To unzoom or use predefined zoom levels

Right-click in the display panel to open the Control Menu (see [File Player Control menu](#) on page 76), then click Zoom, and select Unzoom, Zoom x2, Zoom x4, or Zoom x8.

1:1 Or, click the 1:1 button to unzoom, or right-click the button to open a menu where you can set the zoom level — Zoom x2, Zoom x4, or Zoom x8.

File Player Display settings

The Display settings page lets you control how video is displayed in the File Player.

To open the Display settings page



Click the Setup button in the File Player control panel, then click the **Display** tab.

Video Size	Display video at 50%, 75%, 100%, 200%, or full screen.
Options	<p>LCD Display Display track number and current playback time on an LCD display.</p> <p>Always on Top Always display File Player on top of other applications.</p> <p>Auto Hide Controls when in Full Screen Automatically hides controls in full-screen mode if no user interaction occurs. Controls automatically re-appear if you move the mouse.</p> <p>Keep Aspect Ratio Maintains the aspect ratio (width-to-height ratio) when you resize the display.</p>
Time Mode	Set the time mode: Elapsed Time , Remaining Time , or Total Time .
Tool Tips	<p>Show Tool Tips Displays helpful aids for using the File Player.</p> <p>Show Shortcut Displays shortcut keys.</p>

File Player Preferences settings

The Preferences settings page lets you specify power management settings.

Power Management

Select one of the following levels:

Always

Power management always enabled.

Disabled while playing

Power management is disabled while a CD is playing.

Allow display to turn off while paused

Only the display turns off when playback is paused.

Disabled

Power management is never enabled.

File Player Stills Gallery settings

You can capture still images from the File Player.

To open the File Player Stills Gallery settings page



Click the Setup button in the File Player control panel, then click the **Stills Gallery** tab. For information on Stills Gallery, see [Stills Gallery](#) on page 52.

File Player Schedule settings

You can schedule the File Player to play media files on the dates and times you specify. If you have the features installed, you can also schedule events for CD Audio, TV Magazine, Digital VCR, and TV.

To set up scheduled events




Click the Setup button in the File Player control panel, then click the **Schedule** tab. The Schedule Wizard will guide you through creating new scheduled events. See [Schedule](#) on page 80 for details.

Schedule

Use the Schedule feature to activate events on the dates and times you want. You can schedule events for CD Audio, TV Magazine, Digital VCR, File Player, and TV.

To set up scheduled events

 Click the Setup button in the DVD, TV, CD Audio, or File Player control panel. Click the **Schedule** tab, and then click the **Create New** button.

The Schedule Wizard will guide you through creating new scheduled events. Step 4 of the Wizard asks if you want to set up feature-specific settings (for example, if you are recording video, you can specify quality and duration for particular events). When you click the **Finish** button, your event is added to the scheduled event list; checked items are active.

Schedule settings

Name	The name of the event. Checked events are active.
Feature	The feature to schedule: CD Audio, File Player, Television, TV Magazine, Video Capture, or Video CD.
When	When the event occurs.
Next Run Time	The next time the event will run.
Modify	Click to change values for a scheduled event.
Delete	Remove a scheduled event.
Delete All	Remove all scheduled events.

- Events whose date (On Month & Day) has passed are not automatically removed. To re-activate an event, set its Month & Day to today or later.
- If a settings page is open, or if the About Help... box is being displayed, the Scheduler cannot process events. If an event occurs, a warning dialog tells you that a particular event was not processed.
- When the Multimedia Center first runs, if there are any scheduled events recorded, and the Scheduler program is not running, a warning dialog tells you that the scheduled events will not be processed.

You can run the Scheduler immediately, and/or install it in your Windows Startup file, so that it runs every time Windows is started. the warning dialog is displayed whenever you click OK after adding an item to the scheduled viewing list.

TV Out

You can connect a television set as your computer's display, and use your Multimedia Center to view computer output directly on your television in NTSC or PAL formats, connect using Composite or S-Video output capabilities, and display images on the TV and PC monitor simultaneously.

TV Out provides a big-screen experience for entertainment PCs that is ideal for playing games, giving presentations, watching movies, and browsing the Internet.

Note You must attach a TV before enabling TV out. For information on attaching a TV, see the User's Guide for your ATI card.

To enable the television display

- 1** In the Windows taskbar, click **Start**.
- 2** Point to **Settings ►**, then click **Control Panel**.
- 3** Double-click **Display**.
- 4** Click the **Settings** tab.
- 5** Click **Advanced...**
- 6** Click **Displays**.
- 7** Click the **TV** button.
- 8** Click **OK**.

To cancel TV Out, click the TV button to clear it.



For more information about television display, click Desktop Help.

Multi-monitor support

The DVI-I interface on ALL-IN-WONDER RADEON family cards and ALL-IN-WONDER 9000 Series cards can be used to attach a DVI display or an analog monitor, using the supplied DVI-I-to-VGA adapter.

Note

- The PCI versions of ALL-IN-WONDER RADEON, ALL-IN-WONDER VE Series, and ALL-IN-WONDER 9000 Series cards do not support DVI-I.
- Hydravision technology supports DVI or CRT monitor and television

Teletext

ATI's new Teletext application lets you get the most out of working with Teletext. ATI Teletext eliminates all the familiar disadvantages of television's teletext, and allows you to surf in the teletext data stream. The *ATI Teletext User's Guide* provides complete installation and operating instructions.



Note

Teletext is only available in Europe.

Troubleshooting


If you have problems with video or audio, try these suggestions.

Audio problems ...


No Sound

If you have external speakers, ensure that they are powered-on (POWER indicator light is on) and connected to the LINE-OUT or SPEAKER OUT connectors on your sound card.

Still no sound?

- 1 Click **Start**, point at **Settings**, select **Control Panel**, then double-click **Sounds**.
- 2 In the **Events** area, Click **Asterisk**, then click a .WAV file in the **Sound** area.
- 3 Click the Play button  to preview the sound.

If you still do not hear any sound, open the Volume Control:

Click **Start**, point at **Programs**, point at **Accessories**, point at **Entertainment**, then select **Volume Control**. Or, right-click the speaker icon  (usually in the lower-right corner of your screen), then click **Open Volume Controls**.

If the speaker icon is not in your Taskbar, do the following:

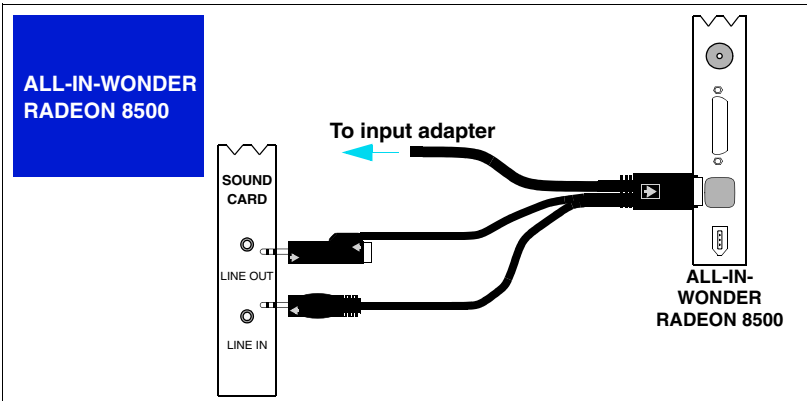
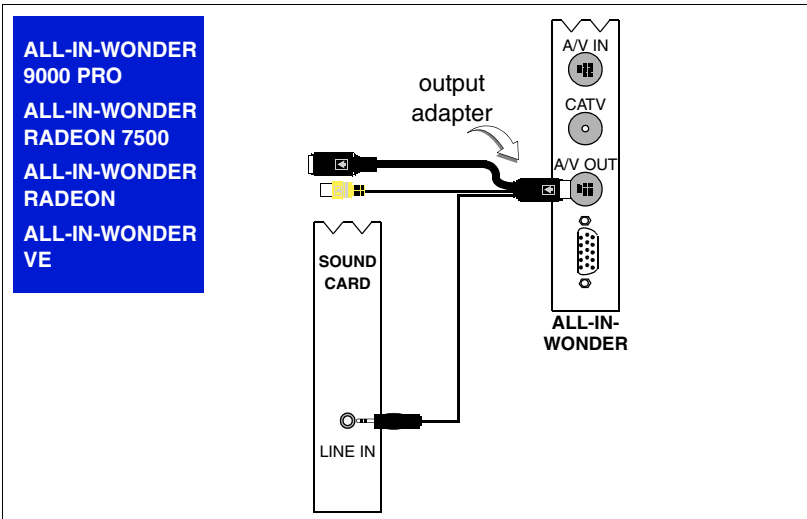
- 1 In the Windows Taskbar, click **Start**, point to **Settings**, click **Control Panel**, then double-click **Multimedia**.
- 2 In the **Audio** tab, check **Show volume control on the Taskbar**, and ensure that the **Volume Control** and the **Wave** channel are not muted or set very low.

When you hear sound from your speakers, you know they are working. If you still experience audio problems, check the audio connections to your ALL-IN-WONDER card.

No sound from TV



Ensure that the audio connection between your ALL-IN-WONDER card and your sound card is correct.

For complete installation instructions, refer to the *ALL-IN-WONDER RADEON 8500DV / 8500 / 7500 / RADEON, ALL-IN-WONDER VE, or ALL-IN-WONDER 9000 PRO Installation and Setup User's Guide.*



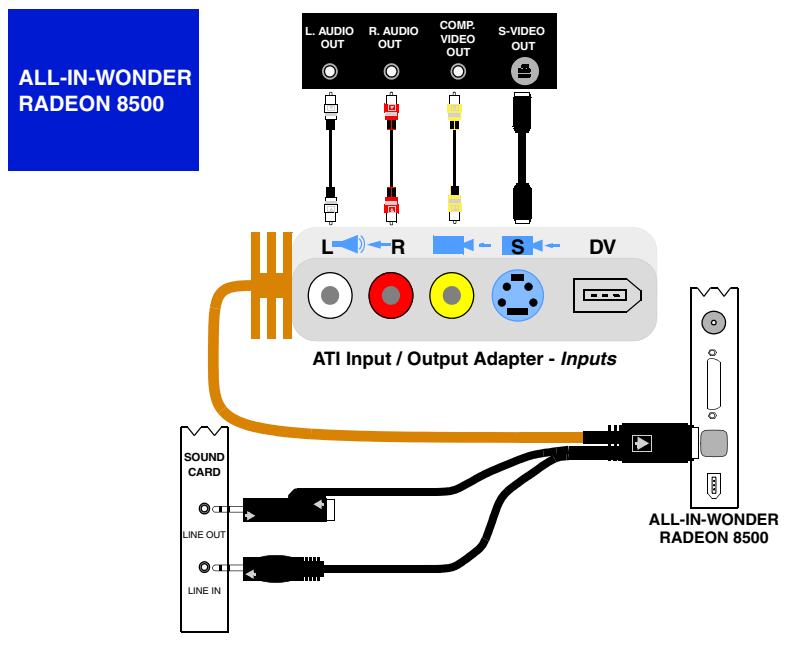
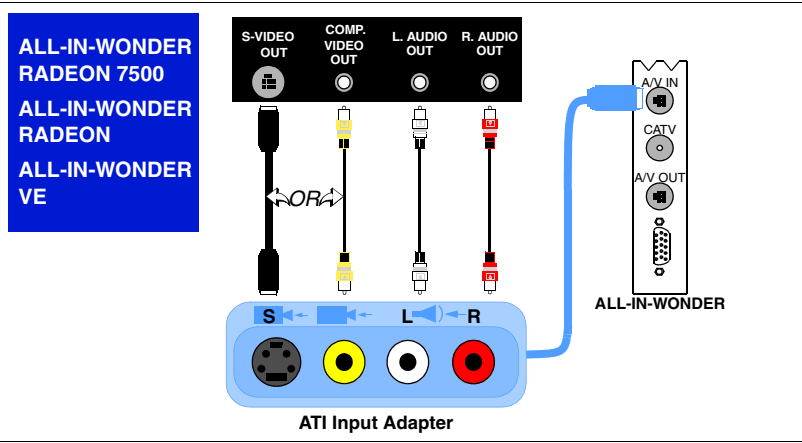
Can't capture sound

Check the record mixer settings:

- 1 Click **Start**, point at **Programs**, point at **Accessories**, point at **Entertainment**, then select **Volume Control**. Or, right-click the speaker icon  (usually in the lower-right corner of your screen), then click **Open Volume Controls**.
- 2 In the **Volume Control** menu, click **Options**, click **Properties**, click **Recording**, then click **OK**. The **Recording Control** opens.
- 3 Ensure that the **Select** box for **Line-In** (or the Audio input you selected in the *Sound Initialization Wizard*—see [page 6](#)) is checked, and that the Volume slider is set to its mid-point. Click  to close the dialog.

Can't capture sound when recording from a videotape

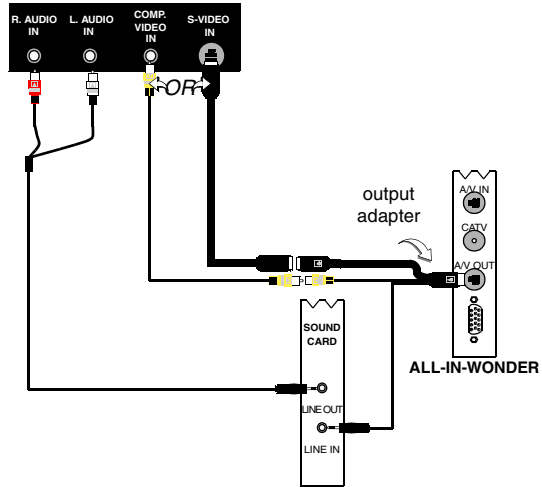
Left and right audio output from your VCR must be connected to your ALL-IN-WONDER RADEON family card (note that S-Video does not provide an audio connection). For complete installation instructions, refer to the *ALL-IN-WONDER RADEON 8500DV / 8500 / 7500 / RADEON* or *ALL-IN-WONDER VE Installation and Setup User's Guide*.



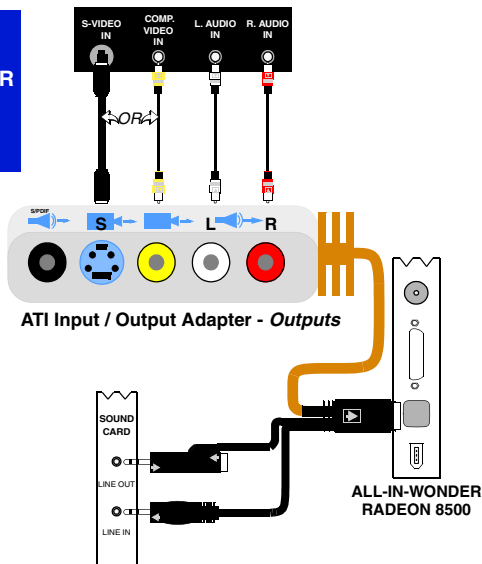
No sound on the videotape when outputting to a VCR

Left and right audio output from your VCR must be connected to your ALL-IN-WONDER RADEON family card (note that S-Video does not provide an audio connection). For complete installation instructions, refer to the *ALL-IN-WONDER RADEON 8500DV / 8500 / 7500 / RADEON* or *ALL-IN-WONDER VE Installation and Setup User's Guide*.

**ALL-IN-WONDER RADEON 7500
ALL-IN-WONDER RADEON
ALL-IN-WONDER VE**



ALL-IN-WONDER RADEON 8500



Video problems ...

<p>Video is unstable or only black and white</p>	<p><i>Check that you are using the correct broadcast standard format.</i></p> <ul style="list-style-type: none"> • See <i>Broadcast Standard</i> in TV video settings on page 10. For proper operation, you must specify your country in the <i>TV Channels Initialization Wizard</i> (see page 6). • Check the quality of your incoming TV signal on another receiver; bad reception may be the cause. • Try connecting your tuner directly to the cable TV or antenna source. Too many splitters in the cable will degrade the signal.
<p>There is no video or audio</p>	<ul style="list-style-type: none"> • Ensure that your cable or antenna is connected. • Ensure that the video connector is set to the correct source (see Connector in TV video settings on page 10). • Check that the audio and video connectors are securely plugged into the correct jacks. • Check that your video card is securely seated in its slot. Please refer to the user guide for the card location.
<p>Video capture stops unexpectedly</p>	<ul style="list-style-type: none"> • Video files are typically very large; ensure that you have sufficient disk space. • Ensure that you are capturing to the correct hard disk — click the Disk Space Settings button in Digital VCR settings (see Digital VCR settings on page 33). • The maximum file size for the FAT 32 file system is 4 Gigabytes. You can reduce the file size by reducing the frame size of the capture in Digital VCR settings. MPEG files are usually much smaller than AVI files. • Disable screen savers while capturing. • Disable Power management while capturing.

Dropped frames during video capture

Dropped frames during video capture indicates that some part of the system is not fast enough to keep up with the capture. Capturing video is a very demanding task for even the most powerful system. To achieve the best results, you must dedicate the PC to capture, and ensure that nothing else is active during capture.

- Defragment your hard drive
- A large, dedicated disk is recommended if you plan to do much video capture
- Ensure that DMA is enabled for your hard drive, to improve disk access speed and free up the system CPU
- Close all other running tasks, including those in the System Tray — clock, popup reminders, virus scanners, etc.
- Close and exit from any Task Scheduler
- Do not log on to your network
- Do not connect USB devices while capturing
- Do not open or close CD-ROM trays while capturing
- Do not move the mouse while capturing

MPEG capture requires a very fast CPU to encode the video.

- Select I Frame Only in the Digital VCR tab in Setup
- Reduce the Motion Estimation slider to 50% or 25%
- Reduce the frame size of the capture

AVI capture creates very large file very quickly, and requires a fast hard disk system.

Try a lower frame size, for example, 320x240. If you do not drop frames using 320x240 frame size, but frame drops do occur at larger frame sizes, your hard disk may not be fast enough.

Captured video has horizontal lines around the action

- If you are capturing to AVI format, reduce the line count in the Frame Size. For example, change the frame size from 480x480 to 480x240. In the Digital VCR Settings page, click the **Set Custom...** button, then click the **Edit...** button, choose your AVI preset, then edit the frame size. (See [Digital VCR settings](#) on page 33.)
- If you are capturing in MPEG format, ensure that **Deinterlacing** is checked. In the Digital VCR Settings page, click the **Set Custom...** button, then click the **Edit...** button, choose your MPEG preset, then check **Deinterlacing**.

Index

Symbols

- .mid 75
- .mp2 75
- .mp3 75
- .mpeg 75
- .mpg 75
- .vcr 75
- .wav 75

A

- ATI TV Bar 15
 - controls 15
- Audio troubleshooting 84
- Autoscan 11
- AVI 75

B

- Blended Desktop 24
- Blended Window 24

C

- Cable standard 11
- Capture Wizard 33, 37
- Capturing video and still images 27
 - saving and compressing captured files 32
- CD Audio 54
 - CD Database 56
 - Schedule settings 57
 - settings 55
- CD Database 56
- Channel Lockout
 - passwords 25
 - Wizard 25
- Channel name 11
- Channel Property Details 11
- Channel Surfing 16
- Closed Captioning
 - settings 17, 72

Closed-captioned text

- transcribing 21

Control menu

- DVD 69
- File Player 76
- TV 8
- Video CD 59

D

Digital VCR

- achieving best results with MPEG 38
- Capture Wizard 37
- One Touch Record 36
- real-time MPEG encoding 37
- setting up 32
- settings 33

DVD 63

- Closed-Captioning settings 72
- control menu 69
- display settings 70
- full-screen controls 64
- Parental Control 67
- Preferences settings 71
- region codes 74
- Schedule settings 73
- searching DVD disks 66
- selecting audio channels 65
- selecting viewing angle 66
- setting up sub-titles 65
- using the menus 66
- Video settings 72
- zooming and panning 67

DVD audio channels

- selecting 65

DVD menus

- using 66

DVD Parental Control 67

DVD sub-titles

- selecting 65

E

Exporting delayed video 31

F

File Player 75

Control menu 76

Display settings 78

Preferences 79

Schedule Settings 79

Schedule Wizard 79

Stills Gallery 52

Stills Gallery Settings 79

zooming and panning 77

G

GUIDE Plus+ 41

H

Help

features, context-sensitive, Tool

Tips, desktop 3

HotWords

setting up 19

Wizard 20

HotWords Wizard 20

HydraVision 83

I

I, B, P frames 38

I-frames 38

Initialization Wizard 6

TV 6

J

Jog Shuttle 31

K

Karaoke CDs 58

L

LaunchPad

starting Multimedia Center from 2

M

Media Library 40

MPEG

achieving best results with video

capture 38

customizing recording settings 37

real-time encoding 37

Multimedia Center

starting 2

using 1

Multi-monitor support 83

O

One Touch Record 36

overview 4

P

Parental Control 26

DVD 67

password 6

Wizard 6

playlist 40

postion slider 31

R

Real-time MPEG encoding 37

Recording quality 33

Region codes 74

Resource conflict 2

S

SAP 23

Schedule

settings 81

Wizard 80

Schedule Wizard

CD Audio 57

DVD 73

File Player 79

TV 14

Secondary Audio Program 23

Settings

CD Audio 55

Closed Captioning 17, 72

Digital VCR 33

- DVD display 70
- DVD Preferences 71
- DVD video 72
- File Player 78
- File Player Preferences 79
- File Player Schedule 79
- File Player Stills Gallery 79
- HotWords 19
- MPEG recording 37
- Schedule 81
- Stills Gallery 52
- TV display 9
- TV Stills Gallery 14
- TV Tuner 11
- TV tuner settings 11
- TV Video 10
- Video CD 61
- Video CD Stills Gallery 62
- Sizing TV display 7**
- Sound Initialization Wizard 6**
- starting from Taskbar 4**
- Starting Multimedia Center 2**
- Still image capture 27**
- Stills Gallery 52**
 - settings 52
- Surfing**
 - channels 16
- T**
- Teletext 83**
- Tool Tips 3**
- Transcribing closed-captioned text 21**
- Troubleshooting**
 - audio 84
 - video 84
- Tuner settings**
 - TV 11
- TV**
 - capturing video and still images 27
 - Channel Lockout 25
 - Channel Property Details 11
 - Channel surfing 16
 - Closed-Captioning settings 17
 - Control menu 8
 - Digital VCR 32
 - HotWords 19
 - Initialization Wizard 6
 - One Touch Record 36
 - Parental Control 26
 - recording a clip of video and audio
 - from TV 28
 - saving and compressing captured files 32
 - Schedule settings 14
 - Secondary Audio Program 23
 - setting up 6
 - starting from LaunchPad 4
 - Stills Gallery 52
 - Stills Gallery settings 14
 - tuner settings 11
 - TV Bar 15
 - TV Listings 41
 - TV Magazine 21
 - TV-on-Demand 29
 - Video Desktop 24
 - video settings 10
 - zoom and pan 23
- TV Bar 15**
- TV Channels Initialization Wizard 6**
- TV display**
 - settings 9
 - sizing 7
- TV Listings 41**
 - accessing information from TV 41
 - Actors tab 45
 - Categories tab 46
 - days and dates 51
 - favorites search 46
 - filter options 45
 - getting around 43
 - movies tab 47
 - recording shows 43
 - Schedules tab 48
 - searches 46
 - Searches tab 48
 - setting search parameters 49
 - setting up, registering, downloading
 - updated listings, customizing channels, updating listings 42

- Sports tab 50
- starting 41
- Stations tab 50
- Titles tab 51
- viewing shows 44
- views, Grid, Log 44

TV Magazine

- setting up 21
- starting 21
- Wizard 18, 21

TV Magazine Wizard 18

TV Out 82

TV-on-Demand 6, 29

- changing playback speed 30
- exporting delayed video 31
- Initialization Wizard 6
- moving within delayed video, Jog
 - Shuttle, position slider 31
- pausing delayed video 30
- playing delayed video 30
- skipping backwards and forwards in delayed video 30
- viewing delayed video 29

V

Video capture 27

- achieving best results with MPEG 38

Video CD

- capturing still frames 60
- Control menu 59
- display settings 61

- Stills Gallery 52
- Stills Gallery settings 62
- Video CD 1.0, Karaoke CDs 58
- zooming and panning 60

Video CD 1.0 58

Video Desktop 24

Video settings

- TV 10

Video troubleshooting 84

Video-In 5

Viewing angles

- selecting 66

W

Wizard 79

- Capture 33, 37
- Channel Lockout 25
- HotWords 20
- Initialization 6
- Schedule 80
- Sound Initialization 6
- TV Channels Initialization 6
- TV Magazine 18, 21
- TV Parental Control 6
- TV-on-Demand 6

Z

Zoom and pan 23

Zooming and panning

- DVD 67
- File Player 77
- Video CD 60