
ATI TV Wonder™ USB Edition Installation and Setup User's Guide

Version 1.0

P/N 117-70069-00

© Copyright 2000, by ATI Technologies Inc.

All rights reserved, including those to reproduce this guide or parts thereof, in any form without the express written permission of ATI Technologies Inc.

Features and specifications are subject to change without notice. Trademarks and/or registered trademarks are the properties of their respective owners:

ATI TV WONDER USB Edition, RAGE PRO, LT PRO, RAGE XL, RAGE 128, RAGE 128 PRO, RAGE Mobility, Mobility 128 AGP, RADEON DDR/SDR – ATI Technologies Inc.;
CDDDB – Escient;

Pentium is either a registered trademark or trademark of Intel Corporation in the United States and/or other countries.

Windows is either a registered trademark or trademark of Microsoft Corporation in the United States and/or other countries.

Millennium G400 is either a registered trademark or trademark of Matrox Graphics Inc. in the United States and/or other countries.

3D Prophet is either a registered trademark or trademark of Guillemot Corp. in the United States and/or other countries.

Riva 128 and **Riva TNT** are either registered trademarks or trademarks of NVIDIA in the United States and/or other countries.

Disclaimer

The manufacturer (MFR) reserves the right to make changes to this document and the products which it describes without notice. The MFR shall not be liable for technical or editorial errors or omissions made herein; nor for incidental or consequential damages resulting from the furnishing, performance, or use of this material.

Table of Contents

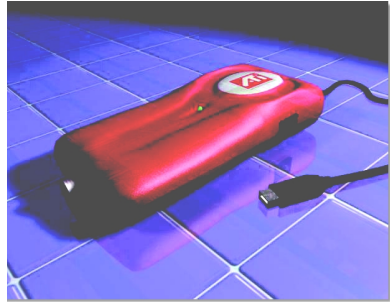
Using Your ATI TV Wonder™ USB Edition	5
Minimum System Requirements	7
Online Help.....	7
Setting up your TV WONDER USB Edition.....	8
Connecting video and audio devices	9
LaunchPad	10
Starting from Windows® taskbar.....	10
Attaching and Detaching Panels.....	11
TV	12
Setting up TV	14
Sizing the TV display	15
TV Control menu.....	16
TV display settings.....	17
TV video settings.....	18
TV Tuner settings.....	19
TV Stills Gallery settings	22
TV Schedule settings.....	22
ATI TV Bar	23
Channel Surfing.....	24
Closed Captioning	25
Hot Words™	27
TV Magazine	29
Zooming and panning.....	31
Video Desktop.....	32
Program Lockout.....	33
Capturing Video and still images	34
Digital VCR	36
Saving and compressing captured video	36
Digital VCR settings	37
TV Listings.....	38
Setting up TV Listings	39
Getting around.....	40
Recording	40
Viewing	41
Views.....	41
Filter options.....	42
Actors tab	42
Categories tab.....	43
Searches.....	43
Favorites Search	43

Movies tab	44
Schedules tab	45
Searches tab	45
Setting search parameters	46
Sports tab	47
Stations tab	47
Titles tab	48
Days and dates	48
Stills Gallery	49
Stills Gallery settings.....	49
CD Audio.....	51
CD Audio settings	52
CD Database	53
CD Audio Schedule settings.....	54
Video CD	55
Video CD Control menu.....	56
Capturing still frames from Video CDs	57
Zooming and Panning	57
Video CD Display settings	58
Video CD Preferences settings.....	59
Video CD Stills Gallery settings	60
File Player	61
File Player Control menu	62
Zooming and Panning	63
File Player Display settings	64
File Player Preferences settings.....	65
File Player Stills Gallery settings	65
File Player Schedule settings.....	65
Schedule	66
Schedule settings	67
Troubleshooting.....	68
Audio problems	68
Video problems	69
Index	Index - 1

Using Your ATI TV WonderTM USB Edition

ATI TV WONDER USB Edition is an economical, external TV-tuner pod that attaches to your computer's USB port.

This chapter explains how to use the special features that your TV Wonder USB Edition offers:



- **Live TV from cable**
- **Live audio up to 16KHz and up to 16-bit**
- **S-Video or Composite video (via adapter) input for external video sources**
- **Full-motion video capture – 30 fps at 320x240 (NTSC), 352x288 (PAL) resolution**
- **VGA (640 x 480) resolution still image capture**
- **Powered by the USB port**



IN THIS CHAPTER...

- **Setting up your TV WONDER USB Edition** on page 8
- **LaunchPad** on page 10
- **TV** on page 12
- **ATI TV Bar** on page 23
- **Digital VCR** on page 36
- **TV Listings** on page 38
- **Stills Gallery** on page 49
- **CD Audio** on page 51
- **Video CD** on page 55
- **File Player** on page 61
- **Schedule** on page 66
- **Troubleshooting** on page 68

Minimum System Requirements

Computer system	<ul style="list-style-type: none"> • PC with a Pentium® processor with MMX • 32 MBytes of memory • USB port • Sound card and speakers
Operating system	Windows 98®, Windows Me®, or Windows 2000®
Display adapter	<p>16-bit, VGA, with video overlay support. The following graphics accelerators work with the ATI TV Wonder USB Edition. (Please visit our web site, www.ati.com, for an updated list of supported graphics accelerators.)</p> <p>ATI products RAGE PRO, LT PRO, Rage XL, RAGE 128, RAGE 128 PRO, RADEON DDR/SDR. RAGE mobility AGP/PCI, Mobility 128 AGP.</p> <p>Other products GeForce Guillemot 3D Prophet™, NVIDIA RIVA 128™ NVIDIA RIVA TNT2™ Model 64, MATROX Millennium G400™</p>
TV source	Antenna or cable

Online Help



Feature Help. Click the Help button in the display panel to open the online help.

F1

Context-Sensitive Help. Context-sensitive help is always available for each feature; just press the F1 key.



Tool Tips. Simply move the mouse cursor over a control to see a description of its purpose. As you become familiar with your TV Wonder USB Edition, you may want to turn off Tool Tips — click the **Show Tool Tips** checkbox in the **Display** tab (for more information, see [TV display settings](#) on page 17).

Setting up your TV WONDER USB Edition

There are two ways to install the hardware and software.

Method 1

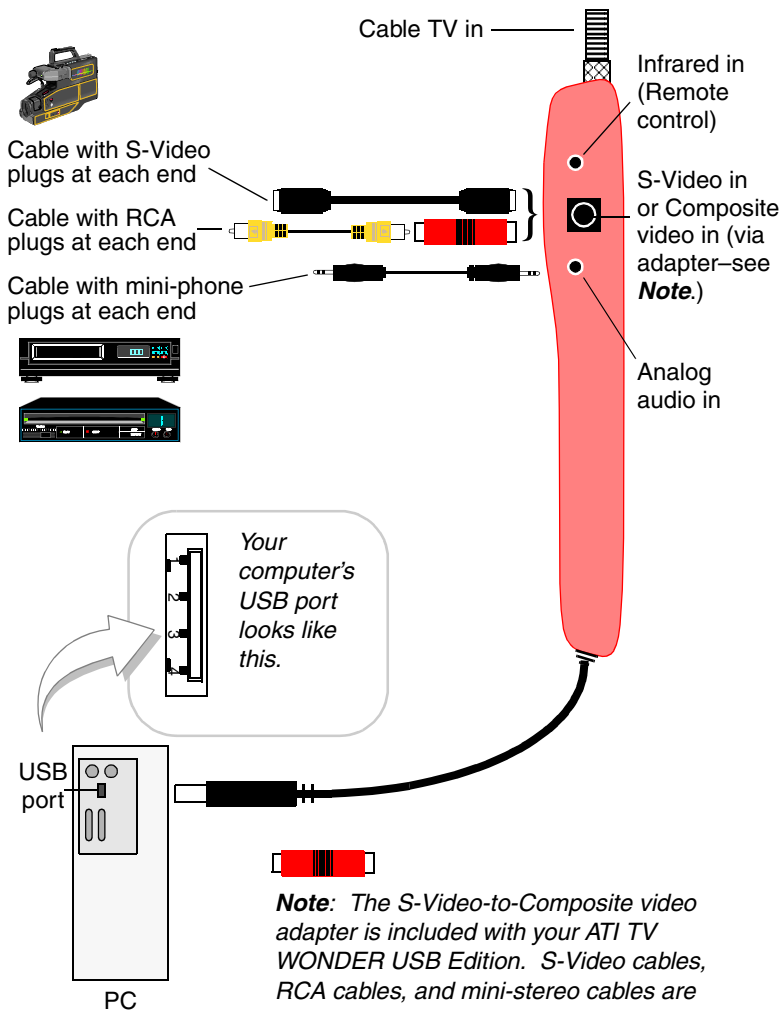
- 1** Turn on your system. Using the supplied USB cable, connect the pod to the USB port.
- 2** When your system finds a USB device:
 - Do not select from the list of possible devices.
 - Click the option to search. Click **Next**.
 - Check the **From a CD** option. Insert the Installation CD, and click **Next**.
(The wording will vary, depending upon the version of Windows.)
- 3** Install the application software from the CD.
- 4** Reboot when prompted.

Method 2

- 1** Insert the Installation CD, and install the application software.
- 2** Reboot when prompted.
- 3** Using the supplied USB cable, connect the pod to the USB port.
 - Do not select from the list of possible devices.
 - Click the option to search. Click **Next**.
 - Check the **From a CD** option. Insert the Installation CD, and click **Next**.
(The wording will vary, depending upon the version of Windows.)

Connecting video and audio devices

You can connect a variety of analog video and audio devices to TV Wonder USB Edition—video camera, VCR, laserdisc player, audiotape, etc. Use the following illustration as a guide.



Note: The S-Video-to-Composite video adapter is included with your ATI TV WONDER USB Edition. S-Video cables, RCA cables, and mini-stereo cables are available separately from a consumer electronics dealer.

LaunchPad



The LaunchPad provides a convenient way to start all your ATI TV WONDER USB Edition features — just click the feature you want. LaunchPad opens automatically when you start your computer, or if you prefer, you can right-click LaunchPad, and uncheck **Load on Startup** in the drop-down menu.

- To dock LaunchPad, right-click it, then click **Dock** in the menu. To change the docking position, right-click LaunchPad while it is docked, point to **Side ▶**, then choose a location.
- To change the size of the LaunchPad when it is not docked, double-click it or right-click it, and choose a size.

The buttons in the upper right of LaunchPad let you access your desktop settings, get Help, and close LaunchPad.

Note

TV, Video CD, and File Player use some of the same resources. If you try to start one of these features while another is running, a resource conflict message appears. You have four choices:

- Run both features with reduced performance, where possible.
- Suspend the first feature while the other is active.
- Close the first feature.
- Press **Cancel** to continue without starting the second feature.

Starting from Windows® taskbar

- 1 In the Windows taskbar, click **Start**.
- 2 Point at **Programs ▶**.
- 3 Point at **ATI TV WONDER USB Edition ▶**.
- 4 Click **CD Audio**, **File Player**, **LaunchPad**, **Video CD**, or **TV**.

For information about using TV WONDER USB Edition features, see the online help.

Attaching and Detaching Panels

You can detach the TV control panel from the display panel, move it to any location on your screen, and re-attach it.

To detach a panel

Move the cursor to the border of the panel you want to detach. As the cursor reaches the border, it changes to the detach symbol. Click the panel, and drag it away.

To attach a panel

Drag a panel to the panel you want to attach until its outline changes, then release the mouse button. The panels will snap back together.

TV

Watch Television on your computer! You can receive up to 125 cable television channels and 70 antenna channels in smooth, full-motion video on the whole screen or in a window.

TV delivers advanced features: Closed Captioning, Video/Still Capture, Channel Surfing, Scheduled Events, TV Listings, and more.



When you click the logo in the upper left corner of the display panel, the “About...” notice appears, and a Task menu displays available and active features.

For information about using TV controls, see the online help and Tool Tips.

- Note**
- All channels may not be available in all countries.

To start TV



from LaunchPad

Click **TV USB Edition** in the LaunchPad. For information on LaunchPad, see [page 10](#).

from Windows® taskbar

- 1** In the Windows taskbar, click **Start**, then point at **Programs ►**.
- 2** Point at **ATI TV Wonder USB Edition ►**, then click **TV**.



You can also start TV from other ATI TV WONDER USB Edition features—Video CD, CD Audio, and File Player. Click the ATI logo in the upper left corner of the feature's control panel, then click **TV**.

Setting up TV

The first time you start TV, you must complete the Initialization Wizard. After that, the Wizard will not run unless you want to re-run it in order to change settings. The Initialization Wizard guides you quickly and easily through setting up TV channels.

Initialization Wizard



Click the Setup button, then click the **Display** tab.

Click the **Initialization Wizard...** button. The *TV Channels Initialization Wizard* appears. Follow the Wizard's instructions to select cable or antenna, choose the broadcast standard, and to scan for active channels.

- If you have TV Listings installed with its current database, it will also add the channel name for each channel. For more information see *TV Listings* on page 38.
- If you do not hear TV audio, ensure that the TV is tuned to a broadcasting channel, and that you have made the correct audio connections. See *Troubleshooting* on page 68 for more information.

Click **Next** >. The *End of Initialization Wizard* panel appears. Click **Finish** to complete TV setup.

Sizing the TV display

You can resize the TV display using the mouse, the Maximize button, or CTRL key combination.

- The F2 key hides/shows the control panel, to save desktop space.



To resize the TV display using the mouse

Drag the display's border. The TV display maintains a fixed aspect ratio (width-to-height) of 4:3 to avoid picture distortion.



To display TV in full-screen

Press CTRL+F or ALT+F, or click the Maximize button. To return to the previous size, click  or press the Esc key.

Ctrl

To display preset sizes using the CTRL key

160 x120 pixels	CTRL+1
240 x180 pixels	CTRL+2
320 x240 pixels	CTRL+3
640 x480 pixels	CTRL+4
Toggle between full screen and current size	CTRL+F ALT+F
Increase size of display panel	CTRL + Up Arrow
Decrease size of display panel	CTRL + Down Arrow

TV Control menu

You can access TV functions by right-clicking on the video viewing area or the control panel. This is very useful in full-screen mode. The following menu items are available:

Setup	Opens the TV setup page.
Always On Top	Displays TV on top of other applications.
Hide Controls	Hides the TV Control panel.
Zooming	Select zoom ratio (2x , 4x , or 8x) or Unzoom if already zoomed. See Zooming and panning on page 31.
Video Size	Indicates the sizes available for the current panel: 160 x 120 240 x 180 320 x 240 640 x 480 Full Screen
Connector	Specifies the video input: TV Tuner Selects TV Tuner input. Composite Selects composite video input. Requires adapter (see Connecting video and audio devices on page 9). S-Video Selects S-Video input.
Closed Captions	Specifies how closed-captioned text is displayed. You can also enable the Hot Words and TV Magazine features. See Hot Words™ on page 27 and TV Magazine on page 29.
About...	Displays the About... dialog.
Exit	Closes TV.

TV display settings

The Display settings page lets you control how video is displayed in TV.

To open the Display settings page



Click the Setup button in the TV control panel, then click the **Display** tab.

Screen Size	Indicates the sizes available for the current panel. If the current panel does not support resizing, the values are greyed-out.
Tool Tips	<p>Show Tool Tip Show helpful aids for using TV when you point at a control with your mouse.</p> <p>Show Shortcut Show keyboard shortcuts when you point at a control with your mouse.</p>
Display Feature	<p>Video Desktop When TV is minimized, TV display replaces your desktop pattern.</p> <p>Fixed Aspect Ratio Click to preserve the width-to-height ratio when you resize or zoom the display.</p> <p>Crop Edges Crop image edges to hide overscan noise.</p> <p>Always On Top Display TV on top of other applications.</p> <p>Auto Hide Controls when in full screen Hide TV controls when displaying TV in full screen.</p>
Hide Player Hotkey	Specify a keyboard key that hides/displays TV.
Initialization Wizard	Re-runs the Initialization Wizard. See Initialization Wizard on page 14.

TV video settings

The video settings page lets you choose a video connector and fine-tune video characteristics.

To open the Video settings page



Click the Setup button in the Television control panel, then click the **Video** tab.

Connector	Choose cable, composite or S-Video input. <ul style="list-style-type: none">If you choose Composite or S-Video, you must specify the Broadcast Standard.
Broadcast Standard	Choose the broadcast standard: NTSC, PAL, or SECAM.
Video Properties	<p>Color Adjusts the amount of color in the image.</p> <p>Brightness Adjust the amount of white in the image.</p> <p>Contrast Adjusts the gradation of tones between light and dark areas.</p> <p>Tint Adjusts the balance of red-to-blue in the image.</p> <ul style="list-style-type: none">Tint is not adjustable for PAL or SECAM.

TV Tuner settings

The tuner settings page lets you autoscans for active TV channels, choose cable or antenna input, name channels, and set channel-specific options.

To open the Tuner settings page



Click the Setup button in the TV control panel, then click the **TV Tuner** tab.

Channel Name	You can enter channel names
Details...	Select a channel, then click the Details... button to open the Channel Property Details page (see Channel Property Details on page 19).
Autoscan	Scans for all active TV channels, and stores them when you click the Set button.
Cable Standard	Selects the country and cable or antenna.

Channel Property Details

When you select a channel and then click the **Details...** button in the TV Tuner settings page, the Channel Property Details page opens to let you set properties for particular channels—favorites list, channel assignment, and properties for audio, video, program lockout, and closed captioning.

For example, in the Channel Specific Settings Video page, you could change a channel to SECAM when the other channels are (by default) PAL. In the Closed Captioning page you could enable a set of Hot Words specifically for a particular channel.

Channel Name	Type a name for the channel.
Number	Displays the channel number.
Tunes to Station	Specify the TV station that is received when you tune to a particular channel. For example, you could assign the actual channel 5 to the Television's channel 2. Autoscanning returns all channel assignments to normal (see Autoscan on page 19).
Channel in Favorite List	Check to add the channel to the channels that TV receives when you click the channel up/down buttons). To remove a channel, uncheck it.
Channel in Visual Selection List	Check to add the channel to the Visual Selection list (see Channel Surfing on page 24). To remove a channel, uncheck it.
Channel Specific Settings	<p>Audio Click Audio, then click Details... to open the Sound details page.</p> <p>Mute Settings</p> <p>Global Applies mute settings to all channels.</p> <p>Mute On Mutes selected channel.</p> <p>Mute Off Cancels all muting.</p> <p>Stereo Activates stereo audio for this channel, if it provides it.</p> <p>Mono Activates monaural audio for this channel.</p>

**Channel
Specific
Settings****Video**

Click **Video**, then click **Details...** to open the Channel Based Video Settings page. Move the sliders to change the values

Color	Amount of color in the image.
Brightness	Balance of light and dark in the image.
Contrast	Gradation of tone between the image's highlights, midtones and shadows.
Tint	Balance of red, green, and blue in the image.

Broadcast Standard

Choose the broadcast standard for this channel.

Program Lockout

Click **Program Lockout**, then click **Details...** to open the Program Lockout Settings page (see [Program Lockout](#) on page 33).

Closed Captioning

Click **Closed Captioning**, then click **Details...** to open the Closed Captioning Channel Settings page (see [Closed Captioning](#) on page 25).

TV Stills Gallery settings

You can capture still images from TV, and save them in the Stills Gallery.

To open the TV Stills Gallery settings page



Click the Setup button in the TV control panel, then click the **Stills Gallery** tab. For information on the Stills Gallery, see [Stills Gallery](#) on page 49.

TV Schedule settings

The Scheduler lets you set up TV to watch or record selected TV programs at times you specify. You can also schedule events for CD Audio, TV Magazine, Digital VCR, and File Player.

To open the Schedule settings page



Click the Setup button in the TV control panel, click the **Schedule** tab, then click the **Create New** button. The Schedule Wizard will guide you through creating new scheduled events. See [Schedule](#) on page 66 for details.

ATI TV Bar

Browse the Web and watch TV at the same time, without resizing your windows! ATI TV Bar displays TV in your Internet Explorer Web Browser.

North American users can also view a display of channel names and numbers, with continuously updated program information.



To open ATI TV Bar

- 1 Launch Internet Explorer.
- 2 In Explorer's menu bar, click **View** ►, point to **Explorer Bar** ►, then click **ATI TV**.



Or click the ATI TV button in Explorer's menu bar.

- If TV is not running, ATI TV Bar opens it, and displays it in the TV Bar. Closing ATI TV Bar also closes TV.
- If TV is running, it is displayed in TV Bar, and the regular TV display disappears from your desktop. Closing TV Bar returns TV to its normal display on your desktop.
- If you resize Explorer, the TV display automatically fits itself to the new size.

ATI TV Bar controls



From left to right, the ATI TV Bar controls are: Channel down, Channel up, Volume, and Mute.


Channel Surfing

You can browse through several TV channels simultaneously, and select channels by clicking on “thumbnail” images (miniature representations) of the channels. Each thumbnail displays the channel number, and is regularly updated to display the current program.



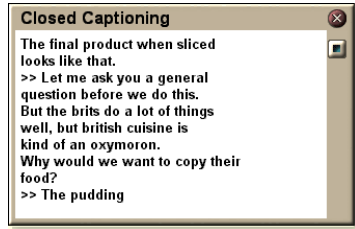
- If any channel in the selection list is a locked-out channel (see *Program Lockout* on page 33), a password is required to access it. If a password is not entered, only unlocked channels are displayed.
- After an autoscan (see *Autoscan* on page 19), all detected channels are included in the selection list. A magnifying glass appears to the left of the lock-out icon. Click the magnifying glass button to add or remove the channel from the selection list.
- Most controls are disabled during Channel Surfing.

To use Channel Surfing

- 1  Click the Channel Surf button in the TV control panel.
A grid of thumbnails appears over your TV display.
- 2 Click the thumbnail for the channel you want to preview.
The channel you clicked becomes “live”, and plays video and audio for a few seconds.
- 3 To select a channel for viewing, double-click a thumbnail.
The grid of thumbnails disappears, and the selected channel appears on your screen.

Closed Captioning

Display closed captioned text over video, like a standard TV, and/or in a separate window beside the video. When you use the separate window, you can use the scroll bar to review the last few minutes of text. You can set the background color, the font, and the font color for the window.



Note Closed-Captioning is only available in North America.

To display closed-captioned text



Click the Closed Caption button in the TV control panel.



To close the Closed Captioning window, click the Exit button.

Closed Caption settings

The Closed Caption settings page lets you specify how closed captioned text is displayed—over video or in a window—and the background color, the font, and the font color for the window. You can also set up and enable the HotWords and TV Magazine features.

To set up closed captioning



Click the Setup button in the TV control panel, then click the **Closed Caption** tab.

<p>Placement</p>	<p>External Window Displays closed captioned text in its own window. Click Font... to select the display font.</p> <p>Video Window Displays closed captioned text superimposed on the video. Click Font... to select the display font.</p> <p>Solid Background Displays closed captioned text on a solid background.</p> <p>Shaded Background Displays closed captioned text on a shaded background.</p>
<p>HotWords</p>	<p>Enable Check to enable HotWords when Closed Captioning is on (see <i>Hot Words™</i> on page 27).</p> <p>HotWords Setup Opens the HotWords settings page.</p>
<p>TV Magazine</p>	<p>Enable Activates TV Magazine (see <i>TV Magazine</i> on page 29.)</p> <p>TV Magazine Setup Opens the TV Magazine Setup Wizard.</p>
<p>Closed Caption On Mute</p>	<p>Display closed captioned text when the audio is muted.</p>
<p>Show Alternate Text If Present</p>	<p>If T1 mode closed captioned data is present in the caption stream, checking this box displays a full page of T1 mode, scrollable, closed captioned text. If you turn off Closed Captioning or change channels, the page is hidden.</p>

Hot Words™

Have your computer watch TV for you! When you turn on Closed Captioning, you can specify words and phrases that Television will detect in the closed-captioned text.

You can set Hot Words to show the matched text, restore TV, play a sound, enable TV Magazine, or enable the Digital VCR when the Hot Words appear. You can also have TV automatically transcribe the text when the specified words appear.

You can enable Hot Words, and then minimize TV; when the specified words occur, TV opens. You specify words using the Hot Words setup button in the Closed Caption settings page.

Note Hot Words is only available in North America.

To set up Hot Words



Click the Setup button in the Television control panel, click **Closed Caption**, then click the **HotWords Setup** button. The HotWords Setup Wizard opens.

To enable HotWords, check the **Enable** box. The HotWords Setup Wizard will guide you through HotWords setup.

First Word	Type the first word to be matched.
Match Type	<p>Choose the type of match you want:</p> <ul style="list-style-type: none"> • By Itself Notify when the First Word occurs. • Followed by Notify when the First Word occurs, and is immediately followed by the Optional Word you specify. • Not Followed By Notify when the First Word occurs, if it is <u>not</u> immediately followed by the Optional Word. • In Sentence With Notify when the First Word occurs, if it is in a sentence with the Optional Word.
Optional Word	Type the word you want to match with the First Word. When you specify an Optional Word, the system only looks for the First Word+Optional Word combination.
Partial	Check this box to notify when a <u>part</u> of the First Word occurs.
<i>Use the Add and Remove buttons to add and remove words from the list.</i>	
Actions to take when your HotWords occur.	<p>Show Matched Text Displays the text that matches your Hot Word(s).</p> <p>Restore Player Opens Television in its current state.</p>
Recording	<p>Enable TV Magazine Activates TV Magazine (see TV Magazine on page 29).</p> <p>Enable Digital VCR Activates the Digital VCR (see Digital VCR on page 36).</p>

TV Magazine

Use TV Magazine to transcribe closed captioned broadcasting, including pictures and text. You can save files as RTF (Rich Text Format), which preserves formatting, and can be used in many word processors, plain text (TXT), or Hypertext Markup Language (HTML). You can use the Schedule feature to start TV Magazine at dates and times you specify (see [Schedule](#) on page 66).

Note

- TV Magazine is only available in North America.
- When TV Magazine is enabled, it transcribes closed-captioned text even if the Closed Captioning button is off.

To start TV Magazine



Click the Setup button in the Television control panel, click the **Closed Caption** tab, then click the **TV Magazine Setup** button.

To enable TV Magazine, check the **Enable** box. The first time you use TV Magazine, the TV Magazine Setup Wizard will guide you through the setup.


<p>File Name</p>	<p>Type a name for the file.</p>
<p>File Format</p>	<p>Select a file format (RTF, TXT, or HTML).</p>
<p>Options</p>	<p>Overwrite files Check to overwrite existing files. Uncheck to keep existing files.</p> <p>Remove Advertising Automatically skips commercial advertising when you display or transcribe closed-captioned text. It works best with programs that use scrolling transcripts rather than “text bubbles” to record closed-captioned text; for example: Talk shows, News broadcasts, Sports, and Soap operas.</p> <p>(Depending upon the closed-captioning format, commercials may occasionally be recorded—a little experimentation will show you how to get the best results.)</p> <p>Case Conversion Convert all characters to upper or lower case.</p>
<p>Stop Transcribing After</p>	<p>Specify the number of minutes to transcribe.</p>
<p>Select Layout</p>	<p>No image No images are saved.</p> <p>Images on Left Images are placed on the left, text on the right.</p> <p>Images on Right Images are placed on the right, text on the left.</p> <p>Alternate images Images and text alternate left and right.</p> <p>Use black & white pictures Save images as black & white, to save disk space.</p> <p>Image Density 1/page 2/page 4/page</p>

Zooming and panning

You can zoom in on the video in the Display panel to enlarge a selected portion of the screen, and return your display to normal. You can also pan (move the image horizontally and vertically) in the zoomed area.

To zoom

Click within the display panel, then hold down the mouse button and draw a rectangle around the area you want to zoom.

 Or, right-click the 1:1 button to open a menu where you can set the zoom level— Zoom x2, Zoom x4, or Zoom x8.



To pan in the zoomed area

Move your mouse within the zoomed area to pan horizontally or vertically.

To unzoom

Right-click in the display panel to open the control menu, point at **Zooming ►**, then click **Unzoom**, or

 Click the 1:1 button in the control panel.

Video Desktop

To replace your desktop pattern with live TV display when you minimize TV



Click the Setup button in the Television control panel, click the **Display** tab, then check **Video Desktop**.



When you minimize Television, live TV display replaces your desktop.



A TV icon appears in the “tray” on the right side of the Windows® taskbar.



Click the icon to display a small control panel that you can use to change channels and control the volume. Closed-captioned information is not displayed.

To restore your desktop pattern and TV

Click the TV button in the Windows® taskbar.


Program Lockout

Program Lockout lets you block particular programs at specific times, and set a password to unlock them. Use the Program Lockout page to specify channel, time, and duration.

Note

- Passwords are **case-sensitive**. For example, PASSWORD, Password, and passWord are *not* the same.
- If you forget your password, you must uninstall and reinstall your TV software to view password-protected programs.

To set program lockout


- 1  Click the Setup button in the Television control panel, then click the **TV Tuner** tab.
- 2 Click the channel you want, then click the **Details...** button.
- 3 Click **Program Lockout**, then click the **Details...** button.
- 4 Click **Create New**.

The Program Lockout Wizard guides you through the lockout procedure.



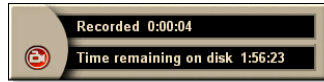
In the channel list, locked-out channels have a padlock to the right of the channel name.

To remove program lockout

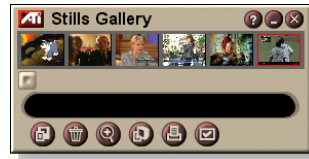
- 1  Click the Setup button in the Television control panel, then click the **TV Tuner** tab.
- 2 Click the channel you want to unlock, then click the **Details...** button.
- 3 Click **Program Lockout**, then click the **Details...** button.
- 4 Select the program you want to unlock.
- 5 Click the **Delete** button. To remove all program locks, click the **Delete All** button.
- 6 Click **OK**.

Capturing Video and still images

Full-motion video. The Digital VCR lets you capture a clip of full-motion video plus audio from your video source and save it as an AVI file on your computer's hard disk. See *Digital VCR* on page 36 for details.



Still images. Capture full-color, 24-bit-per-pixel, still images, save them, and print them. The images are placed in the Stills Gallery, which saves them as Windows-standard bitmaps (.bmp) or a wide variety of standard formats.



The Stills Gallery also supports most industry-standard graphics file formats, so you can insert the images into reports, presentations, letters, and other documents, to add impact to training applications and presentations. See *Stills Gallery* on page 49 for details.

Recording a clip of video and audio from TV

To record a clip of video and audio



Click the Record button in the Television control panel.

The Digital VCR starts recording video and audio to an AVI file on your computer's hard disk. For information on specifying capture formats, see [Digital VCR settings](#) on page 37.



To stop recording, click the Record button in the Digital VCR. A Save As dialog opens, so you can name and save the captured video.

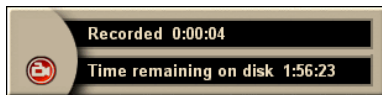
To capture still frames from Television



Click the Camera button in the Television control panel. The current frame is placed in the Stills Gallery (see [Stills Gallery](#) on page 49).

Digital VCR

The Digital VCR provides simple controls and powerful capture options. You can capture a clip of full-motion video and audio from your video source and save it as an AVI file.



Double-click AVI files to open them in the File Player (see *File Player* on page 61). The Schedule feature lets you record TV programs on the dates and times you specify (see *Schedule* on page 66).

To start the Digital VCR

When you capture video (see *To record a clip of video and audio* on page 35) from TV, the Digital VCR opens automatically. If you want the Digital VCR to prompt you before recording, click the **Prompt before Recording** checkbox in the **Digital VCR** tab of the **TV Player Setup** page (see *Digital VCR settings* on page 37).

Saving and compressing captured video

The Digital VCR Custom Settings... page lets you compress your captured video and save it in several industry-standard formats (see *Recording Quality* in *Digital VCR settings* on page 37). The quality of the video that you capture depends on the following conditions:

- speed of your system (CPU)
- amount of system memory (RAM)
- performance of your hard disk
- size of the video capture window
- video codec (encoder-decoder) used

Note

When you compress a file, your original file is **deleted**. To keep the original file, save it under a different name.

Digital VCR settings

Use the Digital VCR settings pages to specify recording quality, duration, general options, and custom settings.

To set up the Digital VCR



Click the Setup button in the TV control panel, then click the **Digital VCR** tab.

Recording Quality	<p>Check Best Quality, Good Quality, or Longest Time. (The higher the quality, the less video you will be able to store on a disk.) For extremely fine control, click the Set Custom button to open the Custom Settings page, where you can create and modify preset capture formats.</p> <p>Click the Create New... button to create a new, preset capture format. The Capture Wizard guides you through the process.</p> <p>Click the Edit... button to modify an existing, preset capture format.</p> <ul style="list-style-type: none"> • Step 2 of the Capture Wizard provides a deinterlacing option. Select it to prevent horizontal streaks in captured video.
Disk Space Settings	<p>Allocates the amount of disk to store captured video.</p> <p>Record to Drive Select the drive to hold captured video.</p> <p>Amount of disk space to leave free Use the slider to set the amount of space to leave on your hard drive. Use this to prevent the recording from completely filling your drive.</p>
Current Settings	<p>Displays the video format, size, frame rate, and audio format for captured video.</p>
Capture Still at 640 x 480	<p>Capture still images in 640 x 480 pixel format.</p>
Prompt Before Recording	<p>Do all capture setup, then display a dialog that starts capture.</p>
Record for	<p>Check the box, then type the number of hours and minutes you want to record.</p>

TV Listings



Gemstar's GUIDE Plus+™ is an electronic television programming guide for Microsoft Windows. It provides advanced program information, such as station names and numbers, as well as program names and details. Before you use TV Listings for the first time, it is recommended that you complete the TV Initialization Wizard (see [Setting up TV](#) on page 14).

You can schedule recording and viewing sessions, search for programs, and maintain a list of your favorite shows. For more information, see the TV Listings Help.

Note

- TV Listings is only available in North America.
- You need an internet connection to download the TV listings to your computer.



To start TV Listings

Click the TV Listings button in the TV control panel, or click **TV Listings** in the LaunchPad.



To access TV Listings information from TV

- When you Autoscan, TV Listings provides station names (see [Autoscan](#) in [TV Tuner settings](#) on page 19.)
- When you change channels, the current program name, and the station name and number are displayed.

Note

When you use TV Listings, the TV Control panel is hidden and the following features are unavailable:

- On-screen display of channel information.
- Resizing the Display panel (see [page 15](#)).
- Zoom and Pan (see [page 31](#)).
- Video Desktop is deactivated when you open TV Listings, and reactivated when you close TV Listings (see [page 32](#)).

TV Listings is unavailable when you use the following features:

- Channel Surf (see [page 24](#)).
- Video capture (see [page 34](#)).

Setting up TV Listings

Registration

The first time you launch the GUIDE Plus+ system, you will need to register. This allows you to download the listings for your area or cable service.

To download updated listings

- 1** In the **File** menu, click **Download Weekly File**.
The Download Assistant opens.
- 2** Click the **Download** button to download the listings.
To make changes, click the **Change Settings** button.

To customize channels

The **Edit** menu contains two features related to the channel list:

- **Station Lists** lets you create and maintain a list of stations, based on the master list for your area or cable service.
- **Channel Numbers** lets you assign and maintain channel numbers for each station.

Getting around

To navigate the various TV Listings views, click the tab for the view you want, or select the appropriate view from the **View** menu at the top of the screen.

Use the mouse or cursor keys to move within the current view. Left-click to select an item and display its details in the details window above the grid or log.

Right-click to open a pop-up menu with various options:

Watch	Adds the item to your Watch schedule (see Schedules tab on page 45).
Record	Adds the item to your Record schedule (see Schedules tab on page 45).
Favorite	Adds the item to your Favorites list (see Favorites Search on page 43).
Details and Showtimes	Opens a window that includes a detailed description of the program, as well as additional air dates.
Go To	Tunes the PIP (Picture-In-Picture—the window in the in the upper left corner of the guide where the TV picture is displayed) to the selected station.

Recording

TV Listings works with your TV tuner to automatically record shows. When you select a program to record, a pop-up window appears, requesting a file name and location to save the file.

When you select a program for recording, the Record icon appears next to the title in any view where that program is displayed.

- To remove a program from the Record Schedule, simply click the Record icon next to the program title.

Viewing

TV Listings works with your TV tuner to automatically display shows. When you select a program for viewing, the Watch icon appears next to the title in any view where that program is displayed.

- To remove a program from the Watch Schedule, simply click the Watch icon next to the program title.

Views

There are two, main views for the guide: **Grid** and **Log**.

Grid view displays 24 hours of listings in a table (similar to your newspaper or cable guide). Use the arrow keys to scroll up, down, left, or right. You can also scroll using the horizontal and vertical scroll bars.

- Scroll to a specific program to display its details in the area above the grid.
- To display just the stations you want, use the **Station Lists** option in the **Edit** menu (see *To customize channels* on page 39.)

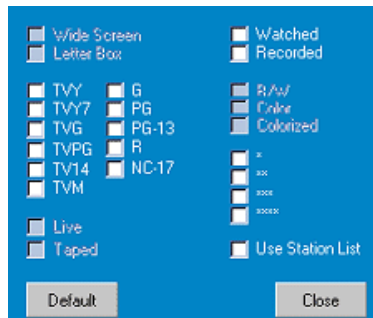
Log view displays the data in a list, in the following order: Date/Station/Category and Title/Episode. Use the arrow keys to scroll up, down, left, or right. You can also scroll using the horizontal and vertical scroll bars.

- Scroll to a specific program to display its details in the area above the log.
- To display just the stations you want, use the **Station Lists** option in the **Edit** menu (see *To customize channels* on page 39.)

Filter options



Click the Filter icon to open the Filter options dialog, where you can adjust the current view and quickly locate programs. Select the boxes you want to apply to the current view, and click **Close**.



Select the **Use Station List** checkbox to apply the most recently customized station list.

Actors tab

The Actors tab displays all actors and actresses starring in all the movies in the current listings. A list of actor names is displayed on the left of the screen. Click the name of the actor for whom you want to display all movies and show times.

- Use the arrow keys to scroll up and down in the Actors List.
- You can also type an actor's partial or full name in the textbox above the Actors List to quickly locate that actor.
- Scroll to a specific program to display its details in the area above the list.
- To display just the stations you want, use the **Station Lists** option in the **Edit** menu (see *To customize channels* on page 39).

Categories tab

The Categories tab displays all genre categories in the current listings. A list of genre categories is displayed on the left of the screen.

- Click the category you want to view, to display all titles for that category on the right side of the screen.
- Double-clicking on categories with a + sign opens a list of sub-categories on the right side of the screen.
- Use the arrow keys to scroll up and down in the Categories List. You can also scroll using the horizontal and vertical scroll bars.
- Scroll to a specific program to display its details in the area above the log.
- To display just the stations you want, use the **Station Lists** option in the **Edit** menu (see *To customize channels* on page 39).

Searches

GUIDE Plus+ comes with a powerful search engine to help you find the programs you want. You can save and maintain a list of custom searches to run each week, as well as a Favorites search that tracks your favorite shows and movies.

Favorites Search

Access the Favorites Search under the **Searches** tab. Favorites are a special list of show titles that you keep and use to find your favorite shows with a mouse click. You can add and remove items from your favorites list from any view in the guide.

- Favorites is always the first search displayed in the Searches tab. It behaves like other searches, but it cannot be deleted.
- When one of your favorites appears in any view of the guide, ☺ appears in front of the title.

Typically, you use the favorites list to find your preferred shows when your data file is updated. Select the Favorites search from the list of searches, and the guide will look up and display all your favorite items. You can then select any or all of these items into your Schedule. You can set Favorites in two ways:

- In any view, select an event you want to place in your Favorites list. Right-click to open the **Event** menu, then select the **Favorite** option to toggle the item in or out of your Favorites list.
- In any list of events, three checkboxes appear in front of the event. The right checkbox is the Favorites indicator; click to toggle it.

Movies tab

The Movies tab displays all movie sub-categories for all movies in the current listings, on the left side of your screen.

- Click the category you want to view; all titles for that category will be displayed on the right side of your screen.
- Use the arrow keys to scroll up and down in the Movies List. You can also scroll using the horizontal and vertical scroll bars.
- Scroll to a specific program to display its details in the area above the log.
- To display just the stations you want, use the **Station Lists** option in the **Edit** menu (see *To customize channels* on page 39).

Schedules tab

A schedule is a list of TV events that you have selected in any view, including search results. The schedule is in the form of a Log View (see [page 41](#)). There are three lists you can choose from:

- **Watch** displays all events with at least the Watch indicator set.
- **Record** displays all events with at least the Record indicator set.
- **All** displays all events with either the Watch or Record indicator set.

In any view, when an event has been scheduled, an icon appears in front of the title, indicating whether the item is scheduled to watch, record, or both. Scheduled items can be added and removed in two ways:

- 1** In any view, select the event you want to place in your schedule, right-click to open the **Event** menu, then select **Watch** or **Record** to toggle the item in or out of your list of scheduled items.
- 2** In any list of events, three checkboxes appear in front of the event; the left checkbox is the Watch indicator, and the center checkbox is the Record indicator. Click either one to toggle it.

Searches tab

The Searches tab displays a list of saved searches, including a list of personal Favorites (see [Favorites Search](#) on page 43), which is always the first search in the list. The Search title is automatically updated when you click it.

- To create a new search, click the **Search** menu, then click **New Search**. The Search dialog opens.
- To edit a saved search, double-click the search title, or launch the Search dialog (as above), then click **Load Search**.

Setting search parameters

To start a new search, in the **Searches** menu, click **New Search** to open the Search dialog, which you can use to set the following options:

Stations	Select All or None using the appropriate buttons at the bottom of the list. To use selected stations, click the station names to highlight them.
Program Categories	Select All or None using the appropriate buttons at the bottom of the list. To use selected categories, click the category names to highlight them.
Date/Time Ranges	Use the pull-down items to select date ranges, and the check boxes to select the hours you wish to include in your search.
Rating	Highlight one or more entries in this list to search for movies with specific quality ratings.
MPAA	Highlight one or more entries in this list to search for movies with specific MPAA ratings.
Parental Guidance	Highlight one or more entries in this list to search for movies with specific ratings.
Text Search	Enter names, titles, and/or keywords in the text box. Check the Title , Desc , and/or Performers boxes to search the appropriate fields for the text.
Year of Release	Use the pull-down items to search for movies before, after, or within specific years.

Use the icons at the top of the Search dialog to:

- Create a new search
- Load an existing search
- Save the current search criteria
- Run the current search
- Exit the search dialog

Sports tab

The Sports tab displays all sports sub-categories for all sporting events in the current listings, on the left side of your screen. Click the category on the left side of the screen for which you want to display all titles. Titles will appear on the right side of the screen.

- If you have the **Use Station List** checkbox in the Filter options checked (see *Filter options* on page 42), only those stations in the currently-selected station list are displayed.
- Use the arrow keys to scroll up, down, left, or right. You can also scroll using the horizontal and vertical scroll bars.
- Scroll to a specific program to display its details in the area above the log.
- To display just the stations you want, use the **Station Lists** option in the **Edit** menu (see *To customize channels* on page 39).

Stations tab

The Stations tab displays listings for each station, on the left side of your screen. Click the station you want, or use the arrow keys to move up or down the list. The listings for that station are displayed on the right side of your screen.

There are two ways to view listings in the Stations tab. You control how the listings are displayed via the Stations tab **Format** option:

- 1 Log view** is the standard view. Each station is shown in its own, rolling log.
 - 2 Grid view** can be activated from the **Grid Mode** option of the **View** menu (see *Views* on page 41). Each station is shown as a 24-hour grid.
- Use the arrow keys to scroll up or down. You can also scroll using the horizontal and vertical scroll bars.

- Scroll to a specific program to display its details in the area above the list.
- To display just the stations you want, use the **Station Lists** option in the **Edit** menu (see *To customize channels* on page 39).

Titles tab

The Titles tab displays all titles in the current listings, on the left side of your screen. Click a title to display all show times for that title, on the right side of your screen.

- Use the arrow keys to scroll up or down. You can also type a partial or full Title name in the textbox above the Title list, and quickly jump to a particular title.
- Scroll to a specific program to display its details in the area above the log.
- To display just the stations you want, use the **Station Lists** option in the **Edit** menu (see *To customize channels* on page 39).

Days and dates

Each view contains listings for the current date. To change the date, select the date you wish to view from the **Dates** menu at the top of the screen.

Stills Gallery

The still images you capture are saved in the Stills Gallery. You can save images in a variety of graphics formats and sizes. The Stills Gallery controls let you delete images, hide them, save them as wallpaper, and print them.

**Note**

If you close the Stills Gallery without saving, your captured still images are **deleted**.



When you click the logo in the upper left corner of the Stills Gallery, the “About...” notice appears, and a Task menu displays available and active features.

For information about using the Stills Gallery controls, see the online help and Tool Tips.

Stills Gallery settings

Use the Stills Gallery Setup page to define how the Stills Gallery saves and prints captured images.

To set up the Stills Gallery



Click the Setup button in the Stills Gallery, TV, File Player, or Video CD control panel, then click the **Stills Gallery** tab.

Capture Options	<p>Capture to Gallery Captures still images to the Stills Gallery.</p> <p>Capture to numbered file Stores captured images in numbered files (pic001.bmp, pic002.bmp ...) on your hard disk.</p> <p>Capture to clipboard Places captured images on the Windows Clipboard.</p> <p>Capture to printer Send the captured image to the printer.</p> <p>Use only 256 colors Saves captured images as 256-color files, to save disk space.</p>						
Save Options	<p>Warn if closed without saving Alerts you if you close Television or the Stills Gallery without saving captured images.</p> <p>Show paths of saved images Displays the drive, folders, and subfolders that contain saved images.</p>						
Tool Tips	<p>Show Tool Tips Display tool tips for the Stills Gallery controls.</p> <p>Show Short Cut Display shortcut keys for the Stills Gallery controls.</p>						
Always on top	<p>Keep the Stills Gallery on top of other applications.</p>						
Print Options	<p>Center image Print image in center of page.</p> <p>Image size:</p> <table border="0"> <tr> <td>Maximize</td> <td>Print in full-page format.</td> </tr> <tr> <td>One to one</td> <td>Print same size as original.</td> </tr> <tr> <td>Double</td> <td>Print twice original size.</td> </tr> </table>	Maximize	Print in full-page format.	One to one	Print same size as original.	Double	Print twice original size.
Maximize	Print in full-page format.						
One to one	Print same size as original.						
Double	Print twice original size.						

CD Audio

Use CD Audio to play standard audio CDs. Advanced features such as Random play, Intro play (which plays the first ten seconds of each track) and Loop play are available. The Schedule feature lets you schedule CD playback on dates and times you specify (see [Schedule](#) on page 66).



When you click the logo in the upper left corner of the display panel, the “About...” notice appears, and a Task menu displays available and active features.

For information about using CD Audio controls, see the online help and Tool Tips.

To start CD Audio



from LaunchPad

Click CD Audio in the LaunchPad. For information on LaunchPad, see [page 10](#).

from Windows® taskbar

- 1** In the Windows taskbar, click **Start**.
- 2** Point at **Programs** ►.
- 3** Point at **ATI TV WONDER USB Edition** ►.
- 4** Click **CD Audio**.



You can also start CD Audio from other ATI TV WONDER USB Edition features—DVD, Video CD, TV, and File Player. Click the ATI logo in the upper left corner of the feature’s control panel, then click **CD Audio**.

CD Audio settings

Use the CD Audio Settings page to set up playlists and shuffle play, and to use an LCD panel for track number and playback time.

To set up CD Audio



Click the Setup button in the CD Audio control panel, then click the **CD Audio Settings** tab.

Play List	Displays all tracks in the playlist (the list of your selections).
Shuffle Play	<p>Shuffle all tracks Play all tracks in random order.</p> <p>Shuffle user playlist Play playlist in random order.</p>
Disc Information	If the information is available, displays the name of the disc and the artist. You can also type in the information.
Available Tracks	Displays the tracks that you can add to the playlist. Use the buttons to add or remove selected tracks or all tracks.
LCD Display	Check to display track number and current playback time on an LCD display.
Tool Tips	<p>Show Tool Tips Display tool tips when you point at a control with your mouse.</p> <p>Show Shortcut Display keyboard shortcuts when you point at a control with your mouse.</p>

CD Database

If you are connected to the Internet, you can use the CD Database to display album title, artist, song names, and other information on your computer as your CD plays.

When you put an audio CD in your CD-ROM drive, the CD Audio program can query a global CDDDB[®] server for information about the disk. If the database contains information for your disk, CD Audio downloads and displays the data.

- Access to the CDDDB service is free of charge to end-users.

To open the CD Audio CD Database page



Click the Setup button in the CD Audio control panel, then click the **CD Database** tab.

<p>Server Address of CDDDB server (default: cddb.cddb.com)</p>	<p>Port Port to use with this CDDDB server (default: 8880). Get Sites List from Server Get sites list from server using current settings.</p>
<p>Protocol</p>	<p>CDDBP Use direct TCP/IP connection. HTTP Use the HTTP connection if you are behind a firewall. A CGI script must be defined (default: /-cddb/cddb.cgi)</p>
<p>Proxy Server Access the database using a proxy server</p>	<p>Server Address of proxy server (a proxy server is another computer on your LAN that connects to the Internet without compromising the security of your network.) Port Port to use with proxy server. Requires Proxy Authentication This proxy server requires authentication.</p>

**Dial-Up
Networking**

Use dial-up networking when accessing the server.

Use this connection when making remote queries

When not connected, connect using this entry.

Only perform remote queries when connected

Access the database only when already connected.

**Disable
CD Database**

No queries are performed when this box is checked.

CD Audio Schedule settings

You can schedule CD Audio to play on the dates and times you specify. You can also schedule events for TV Magazine, Digital VCR, File Player, and TV.

To open the CD Audio Schedule settings page



Click the Setup button in the CD Audio control panel, then click the **Schedule** tab. The Schedule Wizard will guide you through creating new scheduled events. See [Schedule](#) on page 66 for details.

Video CD



Video CD plays Video CD 1.0 CDs and Karaoke CDs.

When you click the logo in the upper left corner of the display panel, the “About...” notice appears, and a Task menu displays available and active features.

For information about using Video CD controls, see the online help and Tool Tips.



To start Video CD

from LaunchPad



Click **Video CD** in the LaunchPad. For information on LaunchPad, see [page 10](#).

From Windows® taskbar

- 1 In the Windows taskbar, click **Start**.
- 2 Point at **Programs** ▶.
- 3 Point at **ATI TV WONDER USB** ▶.
- 4 Click **Video CD**.



You can also start Video CD from other ATI TV WONDER USB Edition features—TV, CD Audio, File Player, and DVD. Click the ATI logo in the upper left corner of the feature’s control panel, then click **Video CD**.

Video CD Control menu

You can access Video CD functions by right-clicking on the video viewing area or the control panel. This is very useful in full-screen mode. The following menu items are available:

Setup	Open the Video CD setup page.
Eject CD	Eject the video CD from the drive.
Play	Play the loaded Video CD.
Pause	Pause playback.
Stop	Stop playback.
Display Size	50% Display video at 1/2 size.
	75% Display video at 3/4 size.
	100% Display video full size.
	200% Display video at double size.
	Full Screen Display video in full screen, no borders.
Show Controls	Display the Control panel.
Audio Channels	Click to select audio tracks for dual-mode MPEG CDs:
	Stereo Stereo audio playback.
	Both Channels Both audio channels active.
	Left Channel Left channel audio only.
Right Channel Right channel audio only.	
Movie Scale	Show Time Display scale in time.
	Show Frames Display scale in frames.
	Time Remaining Display time remaining in current CD.
	Total Time Display total time of current CD.
Zoom	Unzoom Return to normal display.
	Zoom 2x Zoom to double size.
	Zoom 4x Zoom to 4 times size.
	Zoom 8x Zoom to 8 times size.
About...	Display the About... dialog.
Exit	Close the Video CD program.

Capturing still frames from Video CDs

To capture still frames from Video CDs



Click the Camera button in the Video CD control panel. The current frame is placed in the Stills Gallery (see [Stills Gallery](#) on page 49).


Zooming and Panning

You can zoom in on the video in the Display panel to enlarge a selected portion of the screen, and return your display to normal.

To zoom in

Click within the display panel, then hold down the mouse button and draw a rectangle around the area you want to zoom.



 Or, right-click the 1:1 button to open a menu where you can set the zoom level— Zoom x2, Zoom x4, or Zoom x8.

To pan in the zoomed area


Move your mouse within the zoomed area.

To zoom in the zoomed area

Hold down the Shift key, and draw another rectangle in the zoomed area.

To unzoom or use predefined zoom levels

Right-click in the display panel to open the Control Menu (see [Video CD Control menu](#) on page 56), then click Zoom, and select Unzoom, Zoom x2, Zoom x4, or Zoom x8.

 Or, click the 1:1 button to unzoom, or right-click the button to open a menu where you can set the zoom level — Zoom x2, Zoom x4, or Zoom x8.

Video CD Display settings

Use the Video CD Display settings pages to set up video size and general operation.

To open the Video CD Display settings page



Click the Setup button in the Video CD control panel, then click the **Display** tab.

Video Size	Choose playback size: 50%, 75%, 100%, 200%, or Fullscreen.
Tool Tips	<p>Show Tool Tips Show tool tips when you point at controls with your mouse.</p> <p>Show Shortcuts Show keyboard shortcuts when you point at controls with your mouse.</p>
Always on top	Keep Video CD on top of other applications.
Keep Aspect Ratio	Maintain the width-to-height ratio when you resize or zoom the display.
Autohide Controls in Full screen	Automatically hide Video CD controls when playing full-screen.

Video CD Preferences settings

Use the Video CD Preferences settings page to set up general characteristics for your player.

To open the Video CD Preferences settings page



Click the Setup button in the Video CD control panel, then click the **Preferences** tab.

Movie Scale	<p>Show Frames Display scale in frames.</p> <p>Show Time Display scale in time.</p> <p>Show Total Time Display the total time of the playing video CD or file.</p> <p>Show Time Remaining Display the remaining time in the playing video CD or file.</p>
General Settings	<p>Automatically play a loaded CD.</p>
Power Management	<p>Select one of the following levels:</p> <p>Always Power management always enabled.</p> <p>Disabled while playing Power management is disabled while a CD is playing.</p> <p>Allow display to turn off while paused Only the display turns off when playback is paused.</p> <p>Disabled Power management is never enabled.</p>

Video CD Stills Gallery settings

You can capture still images from Video CDs, and save them in the Stills Gallery.

To open the Video CD Stills Gallery settings page



Click the Setup button in the Video CD control panel, then click the **Stills Gallery** tab. For information on the Stills Gallery, see [Stills Gallery](#) on page 49.

File Player

Use the File Player to play various multimedia file formats. The types of file you can play depends on your system's software. You can play the following, multimedia files:

- AVI
- MPEG (.mpg, .mpeg)
- MP (.mp3, .mp2)
- MIDI (.mid)
- WAV (.wav)



For information about using File Player controls, see the online help and Tool Tips

To start File Player



from LaunchPad

Click **File Player** in the LaunchPad. For information on LaunchPad, see [page 10](#).

from Windows® taskbar

- 1** In the Windows taskbar, click **Start**.
- 2** Point at **Programs** ►.
- 3** Point at **ATI TV WONDER USB Edition** ►.
- 4** Click **File Player**.

File Player Control menu

You can access File Player functions by right-clicking on the video viewing area or the control panel. This is very useful when you play files in full-screen mode. The following menu items are available:


Setup	Open the File Player Setup page.
Hide/Show Controls	Hide the File Player Control panel.
Play	Play the current file.
Stop	Stop playing.
Time display mode	Set time mode: Elapsed Time Remaining Time Total Time
Zoom Mode	Set Zoom: Unzoom, Zoom 2x, Zoom 4x, Zoom 8x.
Video Size	Set playback size: 50%, 75%, 100%, 200%, Full Screen.
About...	Displays the “About” dialog.
Exit	Closes the File Player.

Zooming and Panning

You can zoom in on the video in the Display panel to enlarge a selected portion of the screen, and return your display to normal.

To zoom in

Click within the display panel, then hold down the mouse button and draw a rectangle around the area you want to zoom.

 Or, right-click the 1:1 button to open a menu where you can set the zoom level— Zoom x2, Zoom x4, or Zoom x8.

To pan in the zoomed area


Move your mouse within the zoomed area.

To zoom in the zoomed area

Hold down the Shift key, and draw another rectangle in the zoomed area.

To unzoom or use predefined zoom levels

Right-click in the display panel to open the Control Menu (see [File Player Control menu](#) on page 62), then click Zoom, and select Unzoom, Zoom x2, Zoom x4, or Zoom x8.

 Or, click the 1:1 button to unzoom, or right-click the button to open a menu where you can set the zoom level — Zoom x2, Zoom x4, or Zoom x8.



File Player Display settings

The Display settings page lets you control how video is displayed in the File Player.

To open the Display settings page



Click the Setup button in the File Player control panel, then click the **Display** tab.

Video Size	Display video at 50%, 75%, 100%, 200%, or full screen.
Options	<p>LCD Display Display track number and current playback time on an LCD display.</p> <p>Always on Top Always display File Player on top of other applications.</p> <p>Auto Hide Controls when in Full Screen Automatically hides controls in full-screen mode if no user interaction occurs. Controls automatically re-appear if you move the mouse.</p> <p>Keep Aspect Ratio Maintains the aspect ratio (width-to-height ratio) when you resize the display.</p>
Time Mode	Set the time mode: Elapsed Time , Remaining Time , or Total Time .
Tool Tips	<p>Show Tool Tips Displays helpful aids for using the File Player.</p> <p>Show Shortcut Displays shortcut keys.</p>

File Player Preferences settings

The Preferences settings page lets you specify power management settings.

Power Management	Select one of the following levels:
	Always Power management always enabled.
	Disabled while playing Power management is disabled while a CD is playing.
	Allow display to turn off while paused Only the display turns off when playback is paused.
	Disabled Power management is never enabled.

File Player Stills Gallery settings

You can capture still images from the File Player.

To open the File Player Stills Gallery settings page



Click the Setup button in the File Player control panel, then click the **Stills Gallery** tab. For information on Stills Gallery, see [Stills Gallery](#) on page 49.

File Player Schedule settings

You can schedule the File Player to play media files on the dates and times you specify. You can also schedule events for CD Audio, TV Magazine, Digital VCR, and TV.

To set up scheduled events



Click the Setup button in the File Player control panel, then click the **Schedule** tab. The Schedule Wizard will guide you through creating new scheduled events. See [Schedule](#) on page 66 for details.

Schedule

The Scheduler lets you set up TV Wonder USB Edition to play particular files and/or watch or record selected TV channels, start TV Magazine, and capture video at times you specify. You can also schedule events for CD Audio and Video CD.

To set up scheduled events



Click the Setup button in the TV, CD Audio, or File Player control panel. Click the **Schedule** tab, and then click the **Create New** button.

The Schedule Wizard will guide you through creating new scheduled events. Step 4 of the Wizard asks if you want to set up feature-specific settings (for example, if you are recording video, you can specify quality and duration for particular events). When you click the **Finish** button, your event is added to the scheduled event list; checked items are active.

Schedule settings

Name	The name of the event. Checked events are active.
Feature	The feature to schedule: CD Audio, File Player, Television, TV Magazine, Video Capture, or Video CD.
When	When the event occurs.
Next Run Time	The next time the event will run.
Modify	Click to change values for a scheduled event.
Delete	Remove a scheduled event.
Delete All	Remove all scheduled events.

- Events whose date (On Month & Day) has passed are not automatically removed. To re-activate an event, set its Month & Day to today or later.
- If a settings page is open, or if the About Help... box is being displayed, the Scheduler cannot process events. If an event occurs, a warning dialog tells you that a particular event was not processed.
- When ATI TV WONDER USB Edition first runs, if there are any scheduled events recorded, and the Scheduler program is not running, a warning dialog tells you that the scheduled events will not be processed.

You can run the Scheduler immediately, and/or install it in your Windows Startup file, so that it runs every time Windows is started. the warning dialog is displayed whenever you click OK after adding an item to the scheduled viewing list.

Troubleshooting

If you have problems with video or audio, try these suggestions.

Audio problems ...


No sound

Check your speakers:


- If you have external speakers, ensure that they are powered-on (POWER indicator light is on) and connected to the LINE-OUT or SPEAKER OUT connectors on your sound card.

Still no sound?

Play a .WAV sound:

- 1** Click **Start**, point at **Settings** ►, select **Control Panel**, then double-click **Sounds**.
- 2** In the **Events** area, Click **Asterisk**, then click a .WAV file in the **Sound** area.
- 3** Click the Play button  to preview the sound.

If you still do not hear any sound, open the Volume Control:

- Click **Start**, point at **Programs** ►, point at **Accessories** ►, point at **Entertainment** ►, then select **Volume Control**. Or, right-click the speaker icon  (usually in the lower-right corner of your screen), then click **Open Volume Controls**.

If the speaker icon is not in your Taskbar, do the following:

- In the Windows Taskbar, click **Start**, point to **Settings**, then click **Control Panel**.
 - Double-click **Multimedia**.
 - In the **Audio** tab, check **Show volume control on the Taskbar**.
-
- Ensure that the **Volume Control** and the **Wave** channel are not muted or set very low.

When you hear sound from your speakers, you know they are working.

Video problems ...

Video is unstable or only black and white

Check that you are using the correct broadcast standard format:

- See *Broadcast Standard* in *TV video settings* on page 18. For proper operation, you must specify your country in the *TV Channels Initialization Wizard* (see *page 14*).
- Check the quality of your incoming TV signal on another receiver; bad reception may be the cause.

There is no video or audio

- Ensure that your cable or antenna is connected.
- Ensure that the video connector is set to the correct source (see **Connector** in *TV video settings* on page 18).
- Check that your video card is securely seated in its slot. Please refer to the user guide for the card location.

Index

A

ATI TV Bar 23

controls 23

Attaching and detaching control panels 11

Audio and video devices

connecting 9

Audio troubleshooting 68

Autoscan 19

C

Cable standard 19

Capture Wizard 37

Capturing video and still images 34

saving and compressing captured files 36

CD Audio 51

CD Database 53

Schedule settings 54

settings 52

CD Database 53

Channel name 19

Channel Property Details 19

Channel Surfing 24

Closed Captioning

settings 25

Closed-captioned text

transcribing 29

Connecting video and audio devices

9

Control menu

File Player 62

TV 16

Video CD 56

Control panels

attaching and detaching 11

D

Digital VCR

setting up 36

settings 37

F

File Player 61

Control menu 62

Display settings 64

Preferences 65

Schedule Settings 65

Schedule Wizard 65

Stills Gallery Settings 65

zooming and panning 63

H

Help

features, context-sensitive, Tool
Tips, desktop 7

HotWords

setting up 27

Wizard 28

HotWords Wizard 28

I

Initialization Wizard 14

TV 14

K

Karaoke CDs 55

L

LaunchPad 10

M

Minimum system requirements 7

O

overview 12

P

Program Lockout

passwords 33

Wizard 33

R

Recording quality 37

Resource conflict 10

S

Schedule

settings 67

Wizard 66

Schedule Wizard

CD Audio 54

File Player 65

TV 22

Setting up TV WONDER USB

Edition 8

Settings

CD Audio 52

Closed Captioning 25

Digital VCR 37

File Player 64

File Player Preferences 65

File Player Schedule 65

File Player Stills Gallery 65

HotWords 27

Schedule 67

Stills Gallery 49

TV display 17

TV Stills Gallery 22

TV Tuner 19

TV tuner settings 19

TV Video 18

Video CD 58

Video CD Stills Gallery 60

Setup 8

Sizing TV display 15

starting from Taskbar 12

Still image capture 34

Stills Gallery 49

settings 49

Surfing

channels 24

T

Tool Tips 7

Transcribing closed-captioned text
29

Troubleshooting

audio 68

video 68

Tuner settings

TV 19

TV

capturing video and still images 34

Channel Property Details 19

Channel surfing 24

Closed-Captioning settings 25

Control menu 16

Digital VCR 36

HotWords 27

Initialization Wizard 14

Program Lockout 33

recording a clip of video and audio
from TV 35

saving and compressing captured
files 36

Schedule settings 22

setting up 14

starting from LaunchPad 12

Stills Gallery 49

Stills Gallery settings 22

tuner settings 19

TV Magazine 29

Video Desktop 32

video settings 18

zoom and pan 31

TV Bar 23

TV Channels Initialization Wizard
14

TV display

settings 17

sizing 15

TV Listings 38

accessing information from TV 38

Actors tab 42

Categories tab 43

days and dates 48

favorites search 43

- filter options 42
- getting around 40
- movies tab 44
- recording shows 40
- Schedules tab 45
- searches 43
- Searches tab 45
- setting search parameters 46
- setting up, registering, downloading
 - updated listings, customizing channels, updating listings 39
- Sports tab 47
- starting 38
- Stations tab 47
- Titles tab 48
- viewing shows 41
- views, Grid, Log 41

TV Magazine

- setting up 29
- starting 29
- Wizard 26, 29

TV Magazine Wizard 26

TV Wonder USB Edition

- using 5

V

Video capture 34

Video CD

- capturing still frames 57

- Control menu 56
- display settings 58
- Stills Gallery settings 60
- Video CD 1.0, Karaoke CDs 55
- zooming and panning 57

Video CD 1.0 55

Video Desktop 32

Video settings

- TV 18

Video troubleshooting 68

W

Wizard 65

- Capture 37
- HotWords 28
- Initialization 14
- Program Lockout 33
- Schedule 66
- TV Channels Initialization 14
- TV Magazine 26, 29
- TV Schedule 22

Z

Zooming and panning

- File Player 63
- TV 31
- Video CD 57

Safety instructions for TV tuner products



IMPORTANT SAFETY INSTRUCTIONS

- **Read Instructions** - All the safety and operating instructions should be read before the product is operated.
- **Retain Instructions** - The safety and operating instructions should be retained for future reference.
- **Heed Warnings** - All warnings on the product and the operating instructions should be adhered to.
- **Compatibility** - This option card is for use only with IBM AT or compatible UL Listed personal computers that have Installation Instructions detailing user installation of card cage accessories.
- **Grounding** - CAUTION: For Continued Protection Against Risk of Electric Shock and Fire, This Accessory Should Be Installed Only In Products Equipped With A Three-wire Grounding Plug, A Plug Having a third (Grounding) Pin. This plug will only fit into a grounding-type power outlet. This is a safety feature. If you are unable to insert the plug into the outlet, contact your electrician to replace the obsolete outlet. Do not defeat the safety purpose of the grounding-type plug.
- All option card securement pins shall be completely tightened as to provide continuous bonding between the option card and the PC chassis.
- **Outdoor Antenna Grounding** - Since an outdoor antenna or cable system is connected to the product, be sure that the antenna or cable system is grounded so as to provide some protection against voltage surges and built-up static charges. Article 810 of the National Electrical Code, ANSI/NFPA 70, provides information with regard to proper grounding of the mast and supporting structure, grounding of the lead-in wire to the antenna discharge unit, size of grounding conductors, location of antenna-discharge unit, connection of grounding electrodes, and requirements for the grounding electrode.
- **Lightning** - For added protection for this product during a lightning storm, or when it is left unattended and unused for long periods of time, unplug it from the wall outlet, and disconnect the antenna or cable system. This will prevent damage to the product due to lightning and power-line surges.
- **Power Lines** - An outside antenna system should not be located in the vicinity of overhead power lines or other light or power circuits, or where it can fall into such power lines or circuits.
- When installing an outside antenna system, extreme care should be taken to keep from touching such power lines or circuits, as contact with them may be fatal.
- **Note to CATV System Installer** - This reminder is provided to call the CATV systems installer's attention to Section 820-40 of the NEC, which provides guidelines for proper grounding and, in particular, specifies that the cable ground shall be connected to the grounding system of the building, as close to the point of cable entry as practical.